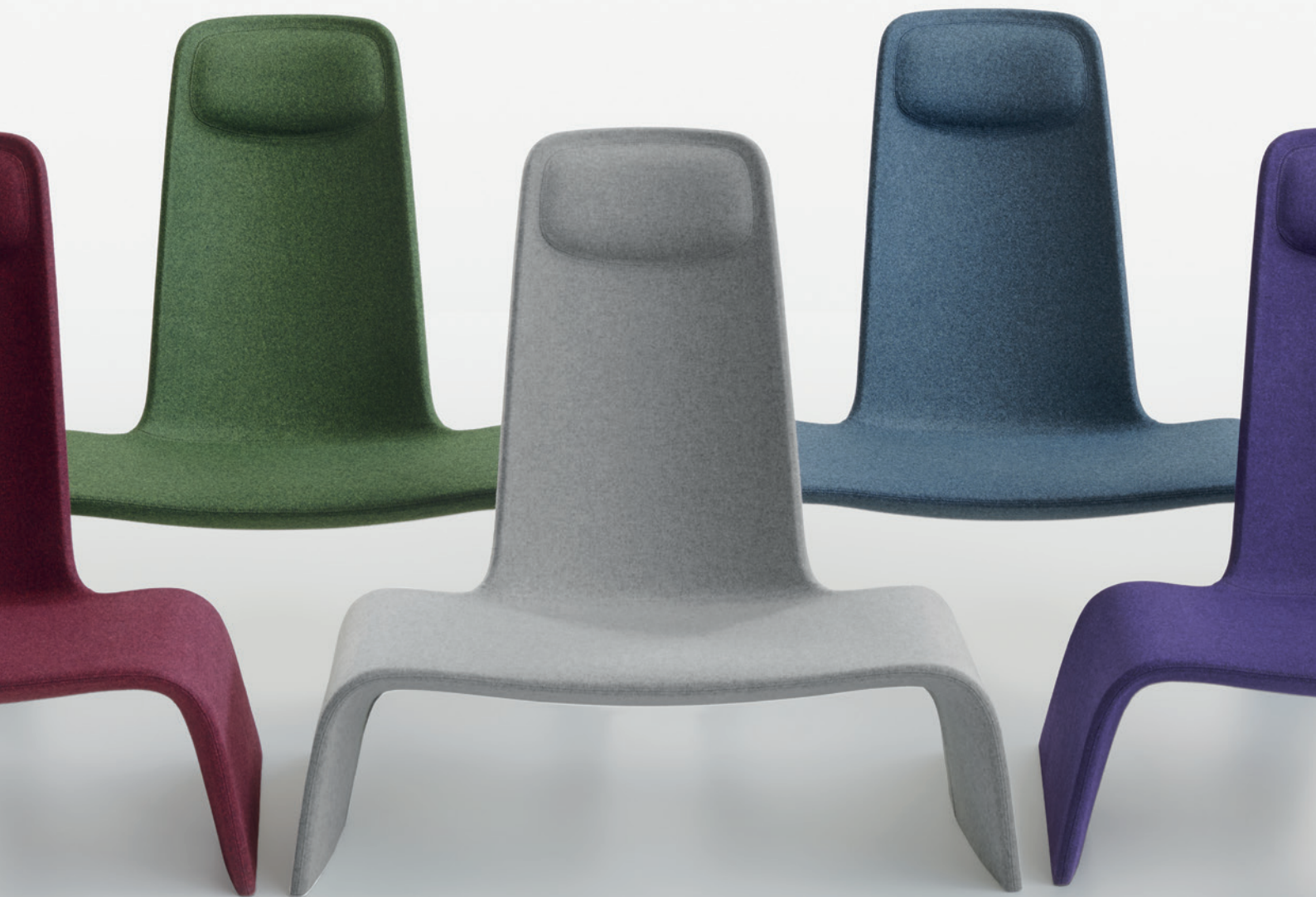


# PLANK<sup>®</sup>

+ design Nation



## LAND

Naoto Fukasawa

[designnation.com.au](http://designnation.com.au)

# LAND

Naoto Fukasawa

4

LAND lounge chair upholstered

16

LAND lounge chair

30

LAND ottoman

# LAND

Naoto Fukasawa

Con la seduta LAND, disegnata da Naoto Fukasawa, Plank amplia la sua collezione lounge. Il progetto pensato sia per l'Outdoor sia per Indoor si caratterizza da linee pure e cerca l'equilibrio relativo al rapporto tra forma e carattere, tra espressione e fluidità. Land è una seduta lounge realizzata con la tecnologia dello schiumato morbido per l'interno e in materiale plastico a stampaggio rotazionale per l'esterno. La versione Outdoor si arricchisce con un poggiatesta / tavolino che ne aumenta la sua funzionalità.

Il sedile basso e leggermente inclinato invita a una postura rilassata con gambe distese e schiena supportata, ma ricorda nello stesso momento la sensazione di essere seduti in una vettura sportiva. Ideale per lounges ed aree d'attesa all'interno ed esterno.

With its LAND chair, designed by Naoto Fukasawa, Plank has widened its Lounge collection. A design distinctive for its pure lines, it seeks to balance the relation between form and character, expression and fluidity. LAND is a lounge chair made in soft polyurethane moulding for indoor and rotational plastic mould technology for outdoor. The Outdoor version is enriched with an ottoman that increases its functionality.

The low, slightly inclined seat of the LAND lounge chairs promotes a relaxed posture with outstretched legs and supported back. At the same time, it provides the feeling of sitting in a sports car. Ideal for indoor and outdoor applications, including lounges and waiting areas.



LAND  
loung chair upholstered

Naoto Fukasawa















LAND  
loung chair

Naoto Fukasawa

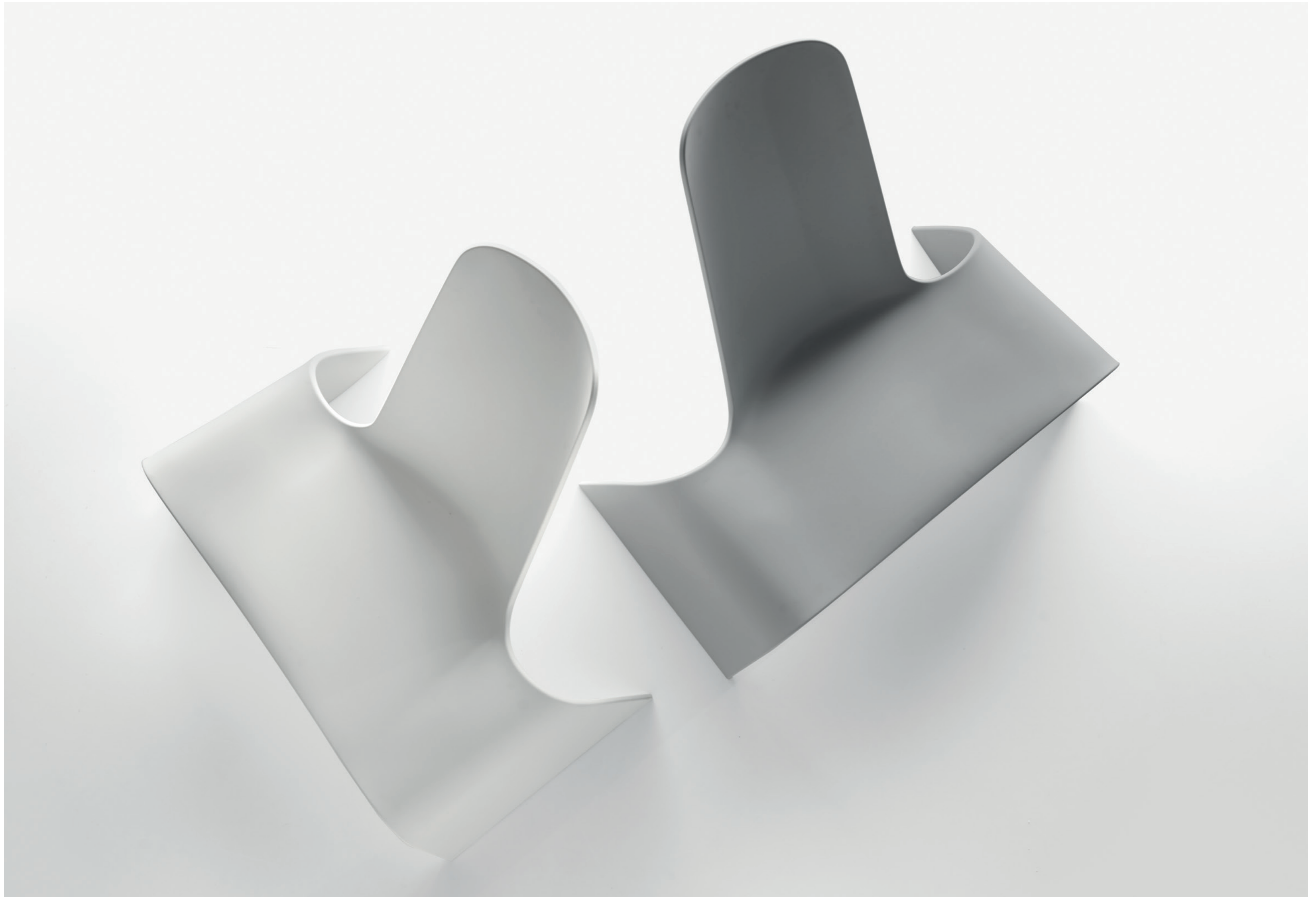
















LAND  
ottoman

Naoto Fukasawa



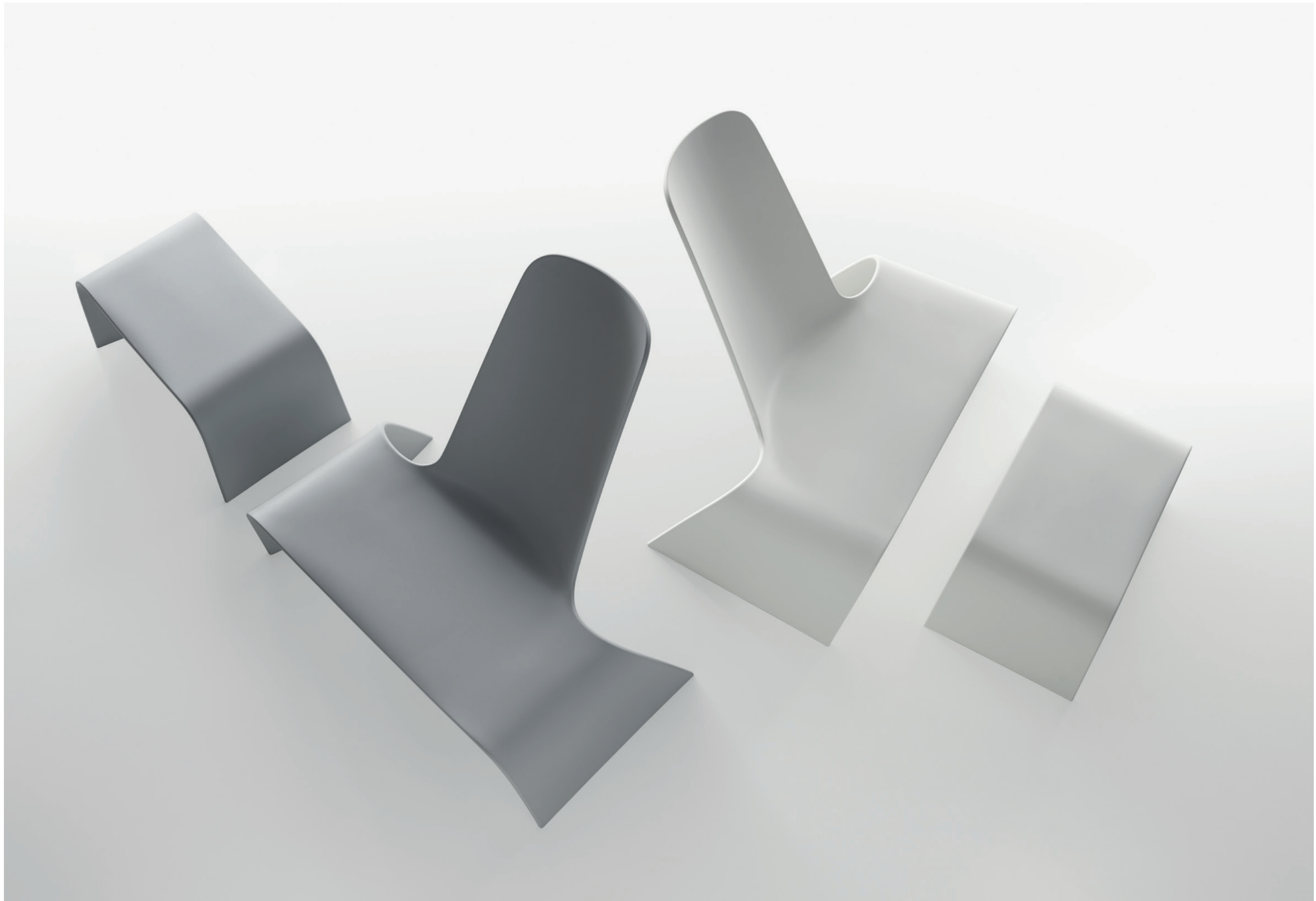


LAND lounge chair with LAND ottoman

LAND lounge chair with LAND ottoman

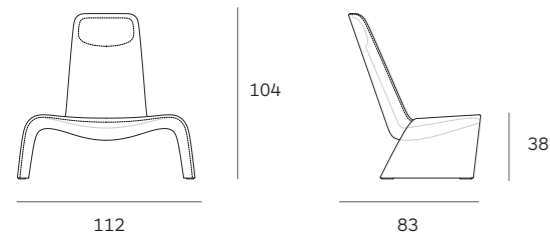






LAND Lounge chair, upholstered design Naoto Fukasawa

Mod. 1150-00



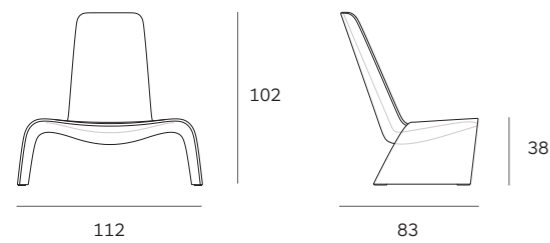
Lounge chair in espanso schiumato a freddo ignifugo rivestimento in tessuto o in ecopelle.

Lounge chair. Injected flame-retardant polyurethane foam covered with textile or synthetic leather.

Lounge chair. Kaltschaum (Feuer-hemmend) mit Überzug in Stoff oder Kunstleder.

LAND Lounge chair design Naoto Fukasawa

Mod. 1100-00

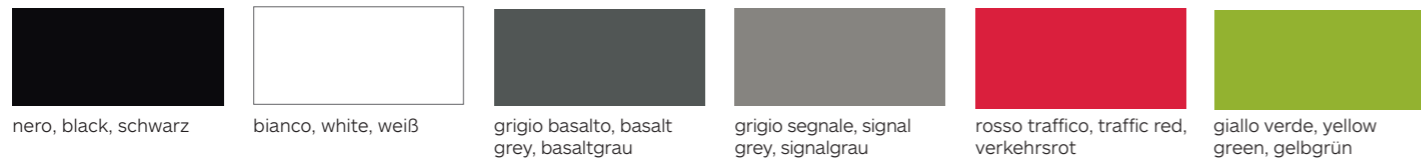


Lounge chair interamente prodotta in plastica (rotostampaggio) nei colori nero, bianco, grigio basalto, grigio segnale, rosso traffico, giallo verde. Per uso interno ed esterno.

Lounge chair entirely made of plastic (rotational molding) in the colors black, white, basalt grey, signal grey, traffic red, yellow green. For indoor and outdoor use.

Lounge chair aus Kunststoff (Rotationsverfahren) in den Farben Schwarz, Weiß, Basaltgrau, Signalgrau, Verkehrsrot, Gelbgrün. Innen- und Außenbereich.

Finiture plastica / Plastic finishings / Kunststoffausführungen  
Polietilene / Polyethylene / Polyethylen



LAND ottoman design Naoto Fukasawa

Mod. 1050-00

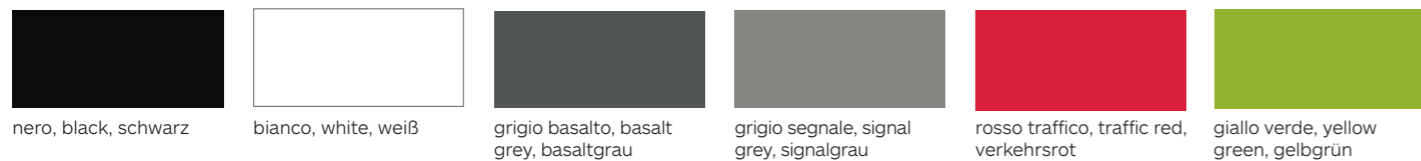


Ottoman interamente prodotta in plastica (rotostampaggio) nei colori nero, bianco, grigio basalto, grigio segnale, rosso traffico, giallo verde. Per uso interno ed esterno.

Ottoman entirely made of plastic (rotational molding) in the colors black, white, basalt grey, signal grey, traffic red, yellow green. For indoor and outdoor use.

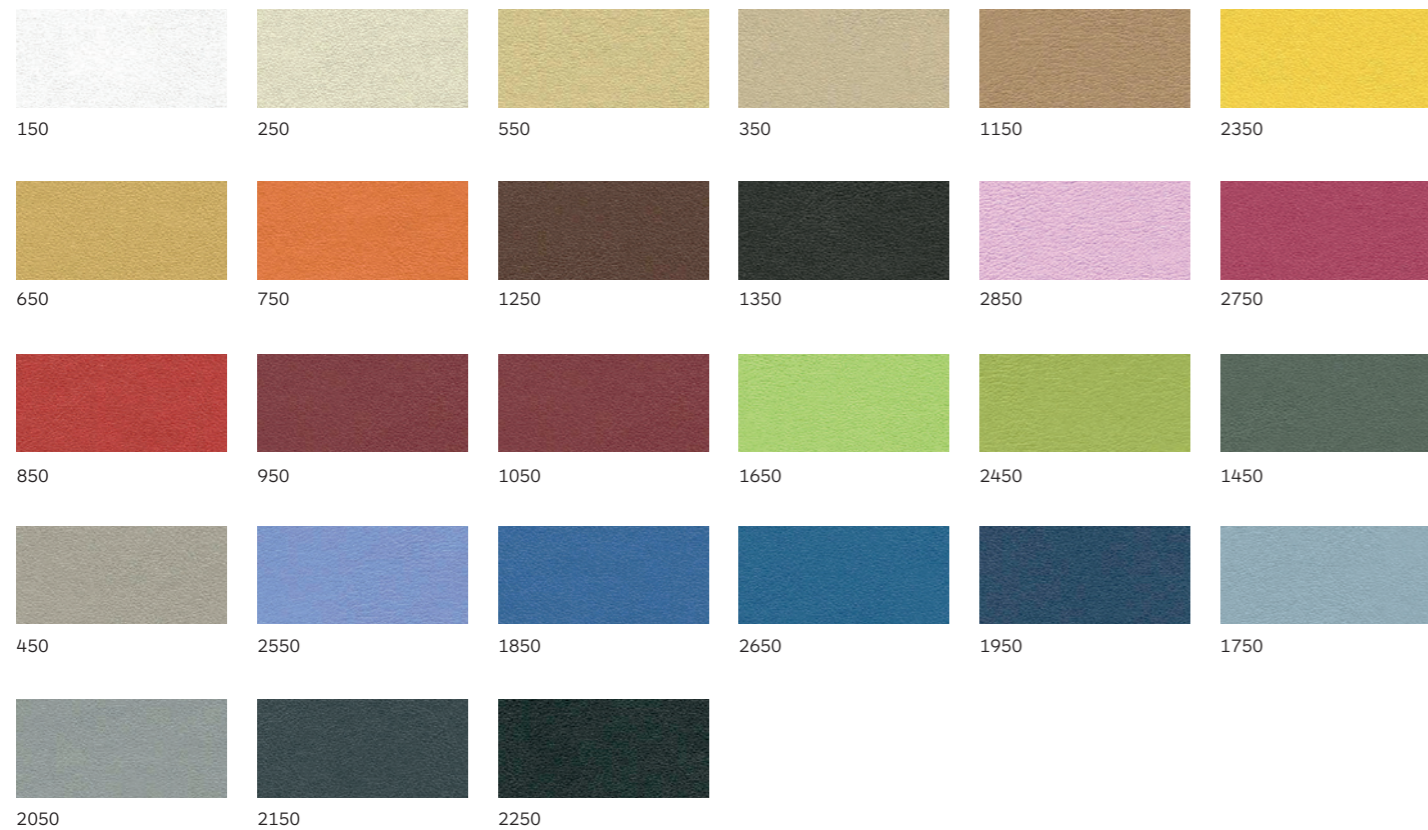
Ottoman aus Kunststoff (Rotationsverfahren) in den Farben Schwarz, Weiß, Basaltgrau, Signalgrau, Verkehrsrot, Gelbgrün. Innen- und Außenbereich.

Finiture plastica / Plastic finishings / Kunststoffausführungen  
Polietilene / Polyethylene / Polyethylen



Finiture / Finishings / Ausführungen  
Tessuto / Fabric / Stoff  
Kvadrat Divina Melange 3

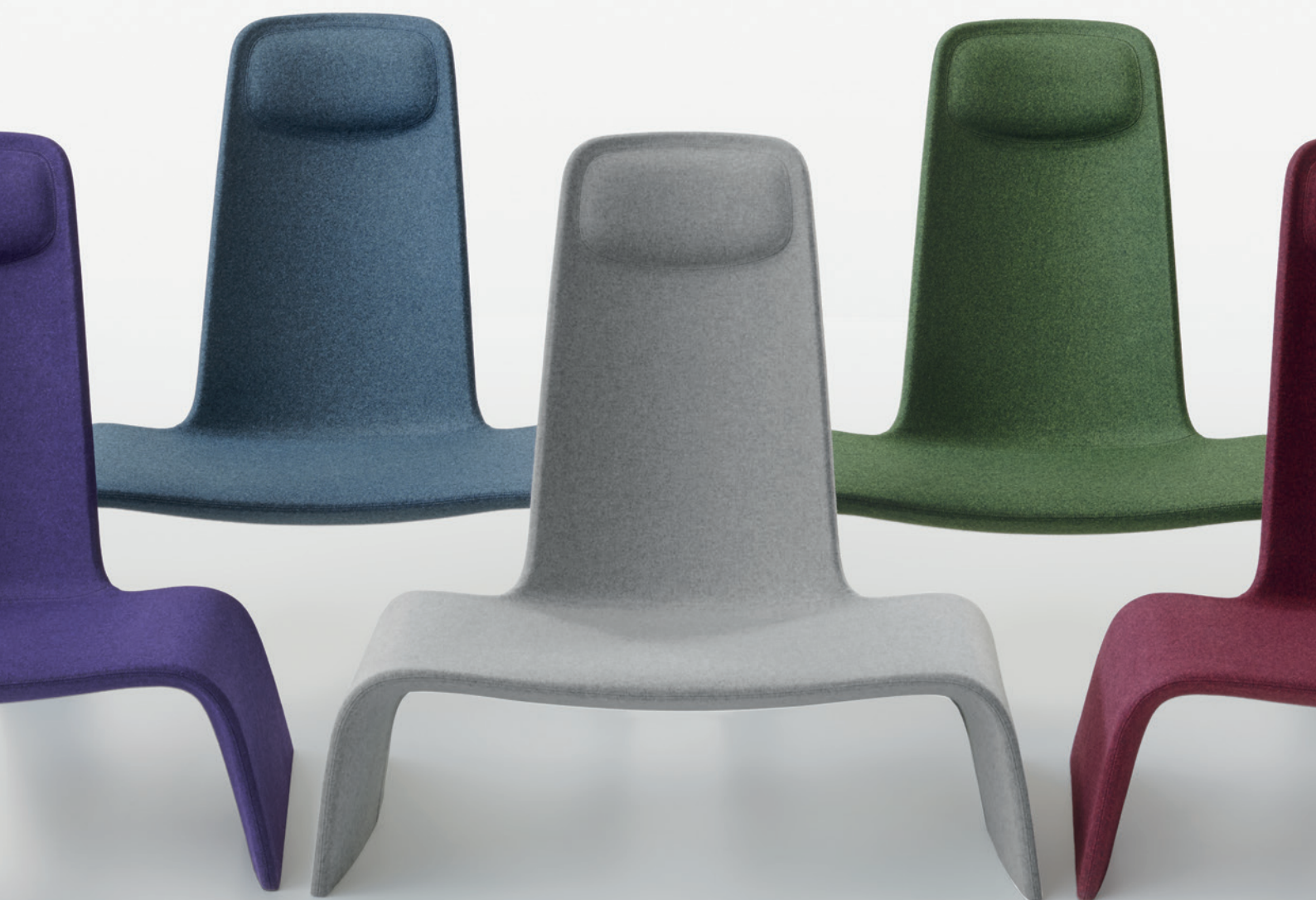




Si prega di notare che le sfumature dei colori su carta e PDF possono apparire diverse dai colori reali dei materiali.

Please be aware that the printed color shades (paper, PDF) can appear different from the real material colours.

Bitte beachten Sie, dass die auf Papier und PDF gedruckten Farbtöne von den tatsächlichen Farben der Materialien abweichen können.



Plank Srl  
Via Nazionale 35  
I-39040 Ora (BZ)  
Tel +39 0471 803 500  
Fax +39 0471 803 599  
info@plank.it  
www.plank.it

[designnation.com.au](http://designnation.com.au)