

infiniti

 design Nation

# FINISHES

# Polypropylene



**S020**  
White



**S021**  
Pearl grey



**R7001**  
Silver grey



**S007**  
Cement grey



**S011**  
Anthracite



**R1012**  
Mustard



**S514**  
Sand



**R3020**  
Red



**S022**  
Tobacco



**S513**  
Military green



**R9001**  
Off-white



**R9010**  
Pure white



**R8022**  
Coal black



**R7015**  
Slate grey



**P421C**  
Almond grey



**P480C**  
Cipria



**P557C**  
Light green



**P7608U**  
Marsala



**R7040**  
Medium grey



**R7035**  
Light grey



**R1027**  
Curry



**R6003**  
Olive green



**R1020**  
Khaki green



**R2001**  
Carrot orange



**R1034**  
Peach

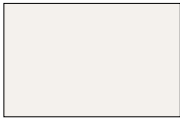


**S001**  
Black



**S503**  
Powder blue

Post Consumer Industrial Polypropylene NEW



**IS020**  
White



**IR7001**  
Silver grey



**IS011**  
Anthracite



**IR1012**  
Mustard



**IS514**  
Sand



**IS022**  
Tobacco



**IS513**  
Military green



**IR9001**  
Off-white



**IR8022**  
Coal black



**IP421C**  
Almond grey



**IP480C**  
Cipria



**IP7608U**  
Marsala

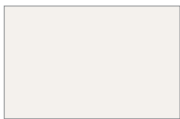


**IS001**  
Black



**IS503**  
Powder blue

Polyamide



**S101**  
White

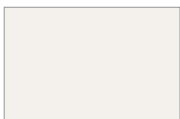


**S117**  
Silica grey



**S102**  
Black

Polyurethane



**S145**  
White



**S102**  
Black



**R3002**  
Red



**S145**  
Silver



**S142**  
Coffee

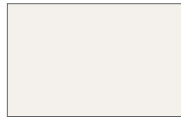


**S143**  
Ivory

Metals



**11**  
Embossed anthracite



**20**  
Embossed white



**03**  
Embossed black



**514**  
Embossed sand



**30**  
Matt white



**31**  
Matt black



**7006F**  
Dove grey fine textured



**54**  
Green fine textured



**7016 F**  
Lead grey fine textured



**7035F**  
Light grey fine textured



**43**  
Aquamarine blue fine textured



**1032F**  
Broom yellow fine textured



**3009F**  
Oxide red fine textured



**1019F**  
Beige grey fine textured



**35**  
Polished grey



**12**  
Black chrome



**13**  
Copper chrome



**14**  
Antique brass



**01**  
Chromium plated



**503F**  
Powder blue fine textured



**9004F**  
Black fine textured



**70**  
Cipria



**26**  
Nude Aluminium

## Solid ash + iroko



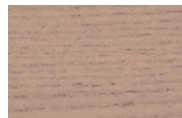
**FRTA04**  
Black stained solid ash



**FRTA59**  
Basalt grey ash



**FRTA63**  
Bluegrey stained ash



**FRTA72**  
Cipria stained solid ash

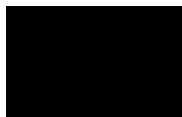


**FRAVAN**  
Natural solid ash



**IKTO04**  
Black painted iroko

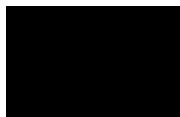
## Solid beech



**FGTA04**  
Black stained solid beech



**FGLP75L**  
Black lacquered solid beech



**FGLP04G**  
Black embossed lacquered solid beech



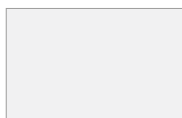
**FGLP74L**  
Grey lacquered solid beech



**FGLP27G**  
Silica grey lacquered solid beech



**FGLP76L**  
Green lacquered solid beech



**FGLP06G**  
White embossed lacquered beech



**FGVAN**  
Natural solid beech



**FGVPN**  
Natural solid beech

## Solid oak + Plywood



**ROTA04**  
Black stained oak



**ROTA28**  
Anthracite stained oak



**ROTA59**  
Basalt grey oak



**ROTA60**  
Terra brown oak



**ROVAN**  
Natural oak



**FRTA04**  
Black stained ash



**FRTA28**  
Anthracite stained ash



**FRTA74**  
Grey stained ash



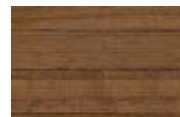
**FRVAN**  
Natural ash



**V005**  
Classic amazouke elegant



**V006**  
Nimbus sapeli sycamore



**V004**  
American walnut

## Walnut

---



**NOVAN**  
Walnut

## Heritage Oak

---



**RH03**  
Natural Heritage oak



**RH08**  
Black Heritage oak

## Heritage Ash

---



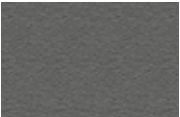
**FRH01**  
Natural heritage ash



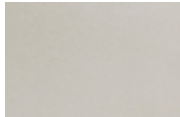
**FRH02**  
Black heritage ash

## Microtopping

---



**MT06**  
Anthracite microtopping



**MT07**  
Dove grey microtopping

## Matt Wood

---



**MW01**  
White



**MW02**  
Black

## Fenix

---



**FX01**  
White



**FX02**  
Black



**FX03**  
Anthracite



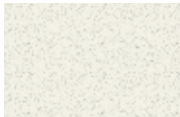
**FX04**  
Bordeaux



**FX05**  
Light grey

## Laminate

---



**LM01**  
White



**LM02**  
Black



**LM08**  
Cement grey



**LM07**  
Sand

## Newpann

---



**NEW04**  
White painted



**NEW06**  
Black painted



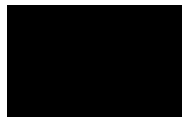
**NEW05**  
Anthracite

## Light Surface

---



**LS02**  
White



**LS03**  
Black



**LS05**  
Anthracite

## Recycled Fibreglass

---



**RFS01**  
Recycled Fibreglass

**F Canvas 2**

Designer: Giulio Ridolfo  
 Composition: 90% New wool worsted, 10% Nylon  
 Height: 140 cm  
 Selvedge: 1  
 Weight: 480 g/mtl

Light resistance: 6-7 (ISO 1-8)  
 Abrasion: 100000 Martindale  
 Colour: there may be slight differences

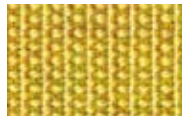
The environment: In compliance with EU environmental regulations  
 Fireproof test AS/NZS 1530.3  
 BS 5852 ig. s. 2-3

DIN 4102 B2  
 EN 1021-1/2  
 IMO A.652(16)  
 NF D 60 013  
 NFPA 260  
 UNI 9175 1IM

US Cal. Tech. Bull. 117  
 ÖNORM B1/Q1



CV414



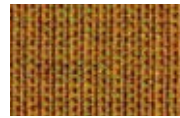
CV446



CV546



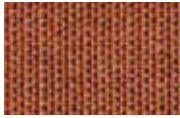
CV556



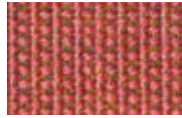
CV424



CV254



CV454



CV576



CV644



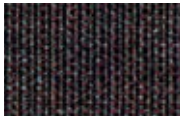
CV654



CV674



CV364



CV374



CV694



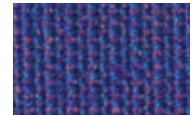
CV684



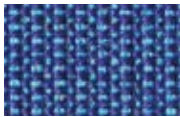
CV786



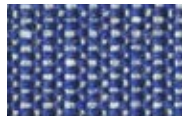
CV794



CV666



CV746



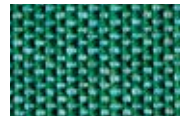
CV726



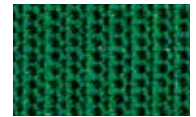
CV734



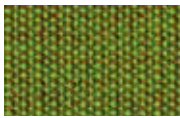
CV984



CV836



CV946



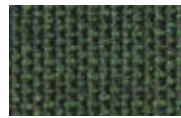
CV954



CV926



CV974



CV996



CV936



CV964



CV264



CV764



CV854



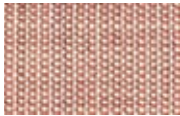
CV356



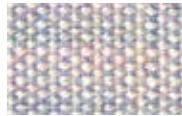
CV244



CV224



CV614



CV716



CV216



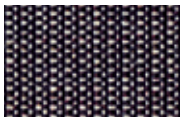
CV114



CV124



CV134



CV154



CV174



CV566



**G Divina 3**

Designer: Finn Sködt  
 Composition: 100% Wool  
 Height: 150 cm  
 Selvedge:  $\updownarrow$   
 Weight: 840 g/mtl  
 Light resistance: 5-7 (ISO 105-B02)

Abrasion: 45000 Martindale  
 Colour: there may be slight differences.  
 The light colours may contain dark fibres.  
 The environment: Naturale fibres / renewable resource

Fireproof test  
 AS/NZS 1530.3  
 BS 5852 ig. s. 5  
 BS 5867, part 2, type B  
 DIN 4102 B2, ÖNORM B1/Q1  
 EN 1021-1/2

EN 13501, C-s1, d0, glued  
 IMO A.652(16)  
 NF D 60 013  
 NFPA 260  
 UNI 9175, 11M  
 US Cal. Tech. Bull. 117



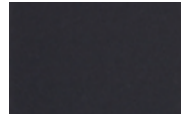
**DV106**



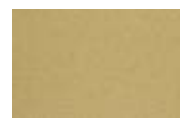
**DV171**



**DV173**



**DV191**



**DV236**



**DV356**



**DV426**



**DV542**



**DV623**



**DV676**



**DV684**



**DV696**



**DV886**



**DV893**



**DV936**

**G** **Divina Melange 3**

Designer: Finn Sködt  
 Composition: 100% Wool  
 Height: 150 cm  
 Selvedge: †  
 Weight: 840 g/mtl  
 Light resistance: 5-7 (ISO 105-B02)

Abrasion: 45000 Martindale  
 Colour: there may be slight differences.  
 The environment: Naturale fibres / renewable resource  
 Fireproof test AS/NZS 1530.3

BS 5852 ig. s. 5  
 BS 5867, part 2, type B  
 DIN 4102 B2, ÖNORM B1/Q1  
 EN 1021-1/2  
 EN 13501, C-s1, d0, glued  
 IMO A.652(16)  
 NF D 60 013

NFPA 260  
 UNI 9175, 11M  
 US Cal. Tech. Bull. 117



**DM120**



**DM180**



**DM260**



**DM0427**



**DM471**



**DM547**



**DM571**



**DM647**



**DM731**



**DM871**

E Field 2

Designer: Alfredo Häberli  
Composition: 100% Trevira  
CS  
Height: 140 cm  
Selvedge:  
Weight: 430 g/mtl

Light resistance: 6-7  
(ISO 1-8)  
Abrasion: 100.000  
Martindale  
Colour: there may be slight  
differences

The environment:  
reduced environmental  
impact  
Fireproof test  
BS 5852 Crib 5  
BS 5852 part 1, ig. s. 0  
DIN 4102 B1

EN 1021-1/2  
FAR 25.853  
IMO FTP Code 2010 Part 8  
NF D 60 013  
NF P 92 507 M1  
ÖNORM B1/ Q1

SN 198 898 5.2  
UNI 9175 1IM  
UNI 9177 Classe 1  
US Cal. Bull. 117-2013



FD123



FD132



FD142



FD173



FD182



FD192



FD222



FD233



FD242



FD343



FD373



FD443



FD463



FD623



FD643



FD662



FD663



FD673



FD693



FD723



FD733



FD763



FD773



FD782



FD793



FD843



FD933



FD943



FD963



FD983

**G** **Fiord**

Designer: Louise Sigvardt & Tone Barnung  
 Composition: 92% Wool, 8% nylon  
 Width: 140 cm  
 Selvedge: †  
 Weight: 500 g/mtl

Light resistance: 5-7 (ISO 105-B02)  
 Abrasion: 60000 Martindale  
 Colour: there may be slight differences.  
 The environment: Naturale fibres / renewable resource

Fireproof test  
 BS 5852 Crib 5 with treatment  
 BS 5852 part 1  
 DIN 4102 B2  
 EN 1021-1/2  
 IMO FTP Code 2010 Part 8

NF D 60 013  
 UNI 9175 1IM  
 US Cal. Bull. 117-2013  
 AS/NZS 3837, class 2



**FO101**



**FO171**



**FO191**



**FO271**



**FO451**



**FO521**



**FO581**



**FO751**



**FO771**



**FO791**



**FO991**

**F Glow**

Designer: Dijkmeijer & Ridolfo  
 Composition: 90% Wool, 10% nylon  
 Height: 140 cm  
 Selvedge: ->  
 Weight: 360 g/mtl

Light resistance: 6-7 (ISO 105-B02)  
 Abrasion: 60000 Martindale  
 Colour: there may be slight differences.  
 The light colours may contain dark fibres.

The environment: In compliance with EU environmental regulations  
 Fireproof test BS 5852 ig. s. 3  
 EN 1021-1/2  
 IMO 2010 p. 8

NF D 60 013  
 UNI 9175, 11M  
 US Cal. Tech. Bull. 117  
 Önorm B1/Q1



**GL443**



**GL453**



**GL543**



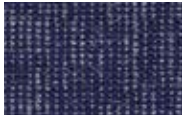
**GL663**



**GL673**



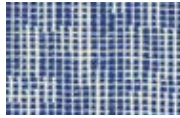
**GL753**



**GL773**



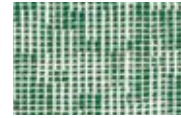
**GL793**



**GL733**



**GL723**



**GL923**



**GL933**



**GL873**



**GL893**



**GL393**



**GL383**



**GL363**



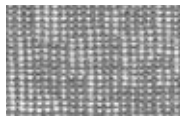
**GL343**



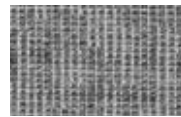
**GL0213**



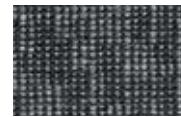
**GL0123**



**GL143**



**GL1153**



**GL183**

**G Harald 3**

Designer: Raf Simons & Fanny Aronsen  
 Composition: 100% Cotone  
 Larghezza: 140 cm  
 Cimossa: -  
 Peso: 520 g/mtl  
 EN 13501, C-s1, d0, glued

IMO A.652(16)  
 NF D 60 013  
 NFPA 260  
 UNI 9175, 11M  
 US Cal. Tech. Bull. 117  
 Resistenza alla luce: 5-6 (ISO 105-B02)

Abrasion: 100000 Martindale  
 Colore: possono riscontrarsi lievi differenze  
 L'ambiente: Fibre naturali / risorsa rinnovabile  
 Fireproof test

AS/NZS 1530.3  
 BS 5852 ig. s. 5  
 BS 5867, part 2, type B  
 DIN 4102 B2, ÖNORM B1/Q1  
 EN 1021-1/2



**HA432**



**HA512**



**HA343**



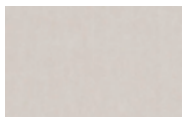
**HA182**



**HA952**



**HA133**



**HA212**



**HA283**



**HA982**



**HA582**

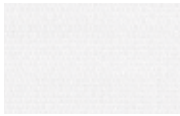
G Patio

Designer: Karina Nielsen  
Rios  
Composition: 100% Trevira  
CS  
Height: 140 cm  
Selvedge: ->  
Weight: 560 g/lin.m

Light resistance: 7 (ISO  
105-B02)  
Abrasion: 50000 Martindale  
Colour: there may be slight  
differences.  
The light colours may  
contain dark fibres.

The environment: In  
compliance with EU  
environmental regulations  
Fireproof test  
BS 5852 ignition source 5  
BS 5852 part 1 ignition  
source 0

DIN 4102 B1, EN 1021-1/2  
IMO FTP Code 2010 Part 8  
NF D 60 013  
NF P 92 507 M1  
UNI 9175 1IM  
US Cal. Bull. 117-2013  
ÖNORM B1/Q1



PA100



PA110



PA140



PA150



PA170



PA200



PA210



PA220



PA230



PA340



PA370



PA410



PA430



PA440



PA450



PA550



PA570



PA650



PA730



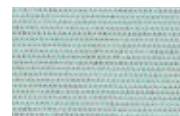
PA740



PA750



PA780



PA840

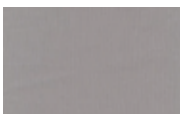


PA970

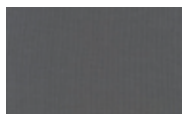
G Planum

NomePlanum - 0111  
progettistaColore grezzo  
genereTappezzeria Febrik  
ModelloSolido  
Composizione44% lana  
vergine, 42% poliestere,  
14% nylon

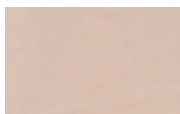
Peso700 g / lin.m  
Larghezza160 cm  
durabilità100.000  
Martindale  
Pilling4  
Solidità alla luce5-6 (ISO  
1-8)



PL111



PL141



PL201



PL241



PL271



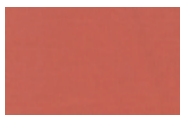
PL351



PL411



PL441



PL521



PL551



PL571



PL681



PL711



PL741



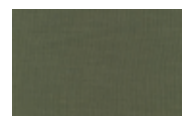
PL751



PL791



PL921



PL941



PL961



PL971

C Reflect

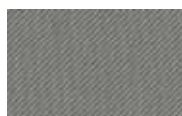
Designer: Patricia Urquiola  
Composition: 100% poliestre riciclato  
Height: 140 cm  
Selvedge: ↔  
Weight: 430 g  
Light resistance: 6-7

(ISO 1-8)  
Abrasion: 100.000 Martindale  
Colour: there may be slight differences.  
Fireproof test AS/NZS 3837

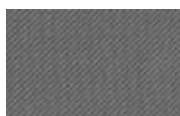
class 1, ASTM E84 Class A  
ASTM E84 Class B incollato  
BS 5852 crib 5 con trattamento ignifugo, BS 5852 part 1 con trattamento ignifugo, EN1021-1/2, US Cal. Bull117-2013



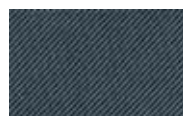
RF104



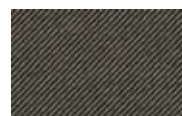
RF154



RF164



RF174



RF184



RF194



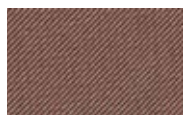
RF204



RF224



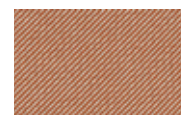
RF274



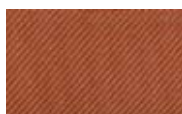
RF374



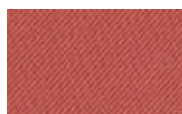
RF404



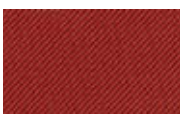
RF444



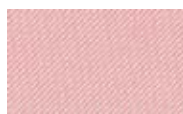
RF464



RF564



RF574



RF614



RF644



RF674



RF694



RF714



RF774



RF794



RF824



RF884



RF944



RF984



RF994

**D Revive 1**

Designer: Georgina Wright  
 Composition: 100% Recycl.  
 polyester FR  
 Height: 140 cm  
 Selvedge:  
 Weight: 420 g/lin.m

Light resistance: 5-7  
 (ISO 1-8)  
 Abrasion: 80.000 Martindale  
 Colour: there may be slight  
 differences  
 The enviroment: reduced

environmental impact  
 Fireproof test  
 BS 5852 part 1, ig. s. 0  
 DIN 4102 B1  
 EN 1021-1/2  
 IMO FTP Code 2010 Part 8

NF D 60 013 with treatment  
 UNI 9175 1IM  
 US Cal. Bull. 117-2013  
 ÖNORM B1/ Q1



**RV424**



**RV534**



**RV634**



**RV664**



**RV524**



**RV434**



**RV414**



**RV454**



**RV274**



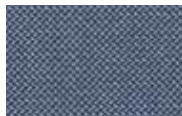
**RV384**



**RV184**



**RV774**



**RV764**



**RV754**



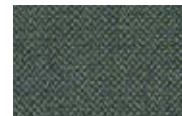
**RV834**



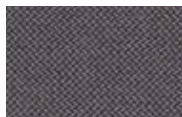
**RV944**



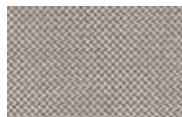
**RV914**



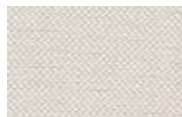
**RV974**



**RV284**



**RV324**



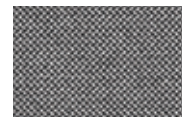
**RV224**



**RV144**



**RV154**



**RV164**



**RV194**



**F Steelcut Trio 3**

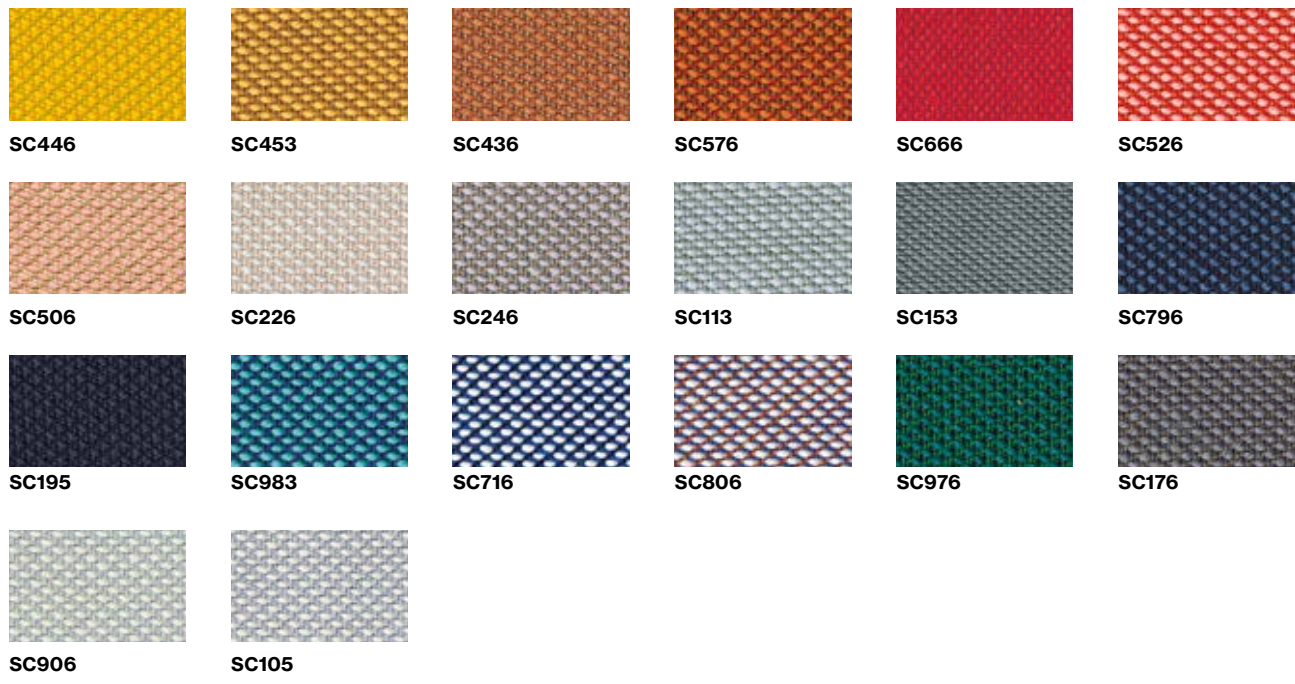
Designer: Dijkemeijer & Ridolfo  
 Composition: 90% Wool, 10% Nylon  
 Height: 140 cm  
 Selvedge:  
 Weight: Umami 770 g/lin.m

Light resistance: 6-7 (ISO 1-8)  
 NF D 60 013  
 NFPA 260  
 SN 198 898 5.5 with FR treatment  
 UNI 9175 1IM

US Cal. Bull. 117-2013 (ISO NORM B1/Q1)  
 Abrasion: Umami 100.000 Martindale  
 Colour: there may be slight differences  
 The environment: natural

fibres / renewable resource  
 Fireproof test  
 AS/NZS 3837, class 2  
 BS 5852 Crib 5 with treatment  
 BS 5852 part 1  
 DIN 4102 B1

EN 1021-1/2  
 IMO FTP Code 2010 Part 8



**E Oceanic**

Composition: 100% post-consumer recycled polyester, including 50% SEAQUAL yarn  
 Weight per square meter:

497 g/m2 ±5% Heavy duty / 10 year guarantee.  
 Independently certified to ≥100,000 Martindale cycles

Fastness to Rubbing: Wet: 4, Dry: 4 (ISO 105 - X12)  
 Flammability: EN 1021 - 1&2  
 Cigarette & Match  
 BS 7176 Low Hazard



**C Patina**

Designer: Finn Sködt  
 Composition: 69% Wool,  
 22% Flax, 8% Polyamide,  
 1% Viscose  
 Width: 140 cm  
 Selvedge: 1  
 Weight: 330 g/mtl

Fireproof test  
 EN 1021 - 1  
 EN 1021 - 2  
 BS 7176 Low Hazard  
 BS 5852 Ignition Source 5  
 BS 7176 Medium Hazard  
 ONORM B 3825 & A 3800-1

UNI 9175 Classe 1 IM  
 BS 5867-2: Type B  
 Light resistance: 5 (ISO  
 105-B02)  
 Abrasion: 100000  
 Martindale  
 Colour: there may be slight

differences.  
 The light colours may  
 contain dark fibres.  
 The environment: Certified  
 to the EU Ecolabel



**PT25**



**PT26**



**PT09**



**PT15**



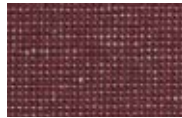
**PT27**



**PT36**



**PT18**



**PT42**



**PT14**



**PT40**



**PT22**



**PT29**



**PT19**



**PT17**



**PT06**



**PT23**



**PT31**



**PT01**



**PT32**



**PT28**



**PT39**



**PT21**



**PT38**



**PT37**



**PT41**



**PT05**



**PT06**



**PT07**



**PT08**



**PT33**



**PT30**



**PT10**



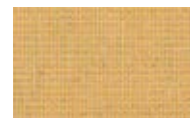
**PT43**



**PT13**



**PT11**



**PT16**



**PT02**



**PT12**



**PT34**



**PT04**



**PT24**



**PT03**



**PT20**



**PT35**

E Yoredale

Composition: 95% Wool, 3% Polyester, 2% Polyamide  
Total width: 138 cm minimum  
Weight per linear meter: 700 g/m2 ±5%  
("Martindale") Abrasion

resistance. Heavy duty / 10 year guarantee. Independently certified to ≥50,000 Martindale cycles

Flammability  
EN 1021 - 1&2 Cigarette & Match  
BS 7176 Low Hazard  
ONORM B 3825 & A 3800-1 (58kg/m3 CMHR Foam)

UNI 9175 Classe 1 IM  
BS 5852 Ignition Source 5 when FR treated BS 7176 Medium Hazard when FR treated



YR01



YR02



YR03



YR04



YR12



YR14



YR15



YR16



YR17



YR18



YR20



YR25

**B Miami**

Composition: 68% Polyester, 12% Polyethylene  
 Total width: 140 cm (UNI EN 1773)  
 Weight per square

meter: 260 g/m2 (± 4%) (UNI 5114)  
 ("Martindale") Abrasion resistance, Rubs: 80000

Light resistance: 7 (ISO 105-B02)  
 Pilling resistance: 5 (ISO 12945-2)



ON REQUEST



WATER-REPELLENT



**PM1102**



**PM2009**



**PM3560**



**PM1986**



**PM3001**



**PM11-3006**



**PM11-5010**



**PM5011**



**PM10-5018**



**PM11-5004**



**PM5001**



**PM7746**



**PM10-6025**



**PM11-6007**



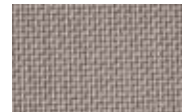
**PM13-6003**



**PM1000**



**PM11-8008**



**PM7744**



**PM6003**



**PM0000**



**PM11-7004**



**PM0978**

**D** Disco Coex

Composition: 70% cotton,  
20% acrylic, 5% viscose,  
5% linen  
Total width: 150 cm  
Total length: 25m  
Weight per square meter:

430 g/m2 (± 4%) (UNI 5114)  
("Martindale") Abrasion  
resistance. Rubs: 50000  
End point (ISO 12947- 2)  
Acoustic Absorption: UUNI  
EN ISO 354:2003

Fastness to Rubbing: 4/5  
(ISO 105 B02)  
Flammability: IMO - 1 IM UNI  
9175 - EN 1021-1-2006 - EN  
1021-2-2006 - CRIB 5 - TB  
117:2013

Is a Fireproof



No-shrink



**DI12**



**DI33**



**DI27**



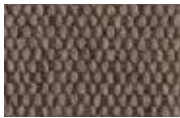
**DI35**



**FL40**



**DI28**



**DI30**



**DI1**



**DI10**



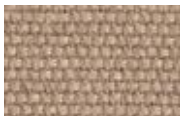
**DI7**



**DI9**



**DI23**



**DI6**



**DI26**



**DI5**



**DI24**



**DI43**



**DI38**



**DI37**



**DI36**



**DI32**



**DI41**



**DI8**



**DI31**



**DI17**

**A Madrid 3D**

Article: madrid 3d (code: 129)  
 Cloth fabric, 100% pp  
 Polipropilene f.R., Available in 19 variant colours, prompt delivery  
 Composition: Polipropilene fr  
 Production: 100% made in italy (produced from the

yarn to finished fabric in our italian factories)  
 Weight per square meter: 250 g/mq.  
 Height: 143 cm.  
 Roll lenght: 50 m.  
 Resistances  
 Abrasion: 100000 martindale cycles  
 Light fastness (en iso

105-b02): 5  
 Fastness to rubbing (en iso 105-x12) wet 4/5, dry 4/5  
 Uni en iso 354:2003  
 Acoustic absorption  
 1.lm uni 9175  
 Bs 5852:part 1:1979  
 Bs en 1021-1:2006  
 Bs en 1021-2:2006  
 Bs 5852:2006 (crib 5)

California technical bulletin 117:2013  
 lmo - 2010 ftp code  
 Din 4102-1 (may 1998)  
 M1  
 Oeko-tex



**MA536**



**MA537**



**MA538**



**MA539**



**MA547**



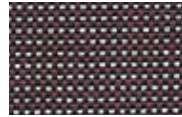
**MA540**



**MA542**



**MA543**



**MA545**



**MA548**



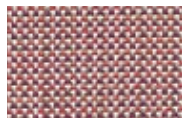
**MA549**



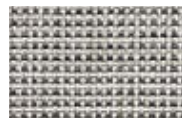
**MA552**



**MA555**



**MA556**



**MA558**



**MA561**



**MA562**



**MA564**



**MA565**

**A Byte**

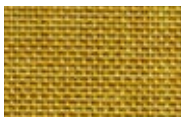
Composition 100%PL  
 Total width: 140 cm (UNI EN 1773)  
 Weight per linear meter: 460 g/LM (± 4%)  
 ("Martindale") Abrasion resistance. Rubs: 30.000  
 End point (ISO 12947- 2)  
 Pilling resistance: 4/5 (ISO 12945-2)

Tensile strength: Length 1000 - Width 1300 (ISO 13934-1)  
 Seam slippage at less than 6 mm: Length >200 - Width >200 (ISO 13936-1)  
 Colour fastness rubbing (dry): staining CO 4/5 (ISO 105-X12)  
 Colour fastness rubbing

(wet): staining CO 4/5 (ISO 105-X12)  
 Colour fastness artificial light: 3/4 (ISO 105 B02)



No-shrink  
 water-repellent



**BY804**



**BY307**



**BY303**



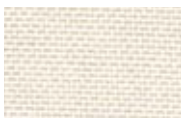
**BY003**



**BY707**



**BY700**



**BY100**



**BY400**



**BY605**



**BY401**



**BY600**



**BY402**



**BY403**



**BY405**



**BY602**

**A Flash No-Shrink**


Composition: 100% PP  
Total width: 140 cm (UNI EN 1773)  
Weight per linear meter: 450 g/LM (± 4%)  
Weight per square meter:

320 g/m2 (± 4%) (UNI 5114) ("Martindale") Abrasion resistance. Rubs: 70000  
End point (ISO 12947- 2)  
Pilling resistance: 5 (ISO 12945-2)

Tensile strength: Length 1398,87 - Width 1091,41 (ISO 13934-1)  
Maximum elongation: Length 48,23% - 26,33% Width (ISO 13934-1)

Seam slippage (6 mm): Length >200 - Width >200 (ISO 13936-1)  
Colour fastness rubbing (dry): staining CO 4/5 (ISO 105-X12)

Colour fastness rubbing (wet): staining CO 4/5 (ISO 105-X12)  
Colour fastness artificial light. Colour change: light 5, medium 4, dark 5 (ISO

105 B02)   
No-shrink



**FL501**



**FL500**



**FL301**



**FL305**



**FL300**



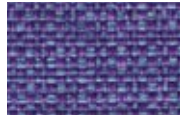
**FL310**



**FL900**



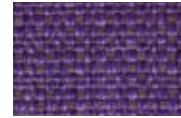
**FL001**



**FL005**



**FL003**



**FL004**



**FL002**



**FL705**



**FL700**



**FL707**



**FL710**



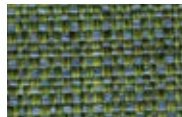
**FL810**



**FL804**



**FL800**



**FL807**



**FL111**



**FL400**



**FL101**



**FL100**



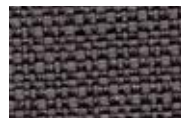
**FL402**



**FL408**



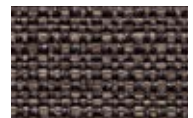
**FL600**



**FL601**



**FL409**



**FL403**



**FL407**



**FL602**



**FL405**



**FL200**



**H Full-grain leather**



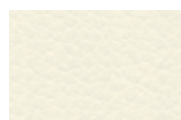
**PR**  
Red



**PC**  
Cuoio



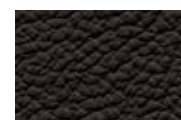
**PB**  
Ivory



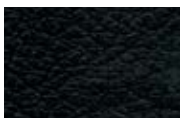
**PW**  
White



**PT**  
Dove grey



**PTM**  
Dark brown



**PN**  
Nero

**B Eco Leather**



Composition: 76%PVC - 2%PU - 22%PES  
 Width: 140 cm  
 Weight: g/m2 540 +/-10  
 Cycles (ISO 5470-2): 60000  
 Colour fastness to dry rubbing (ISO 105-X12): 4/5  
 Colour fastness to wet rubbing (ISO 105-X12): 4/5  
 Colour fastness to light (Xenotest - blu scale) (ISO 105-B02): 6

Adhesion (ISO 2411): > 40  
 Tensile strenght (UNI EN ISO 1421): 600 long.  
 Tensile strenght (UNI EN ISO 1421): 310 trasv.  
 Elongation at break % (UNI EN ISO 1421): 57 long.  
 Elongation at break % (UNI EN ISO 1421): 120 trasv.  
 Tear strenght (UNI EN ISO 4674): 50 long.  
 Tear strenght (UNI EN ISO 4674): 50 trasv.

Cycles (UNI 4818-13): 100000  
 Fireproof test: EN 1021-2:2006 / UNI 9175 classe 1 IM /  
 BS5852-1:1979 part I - TB 117:2013



**SE1007**



**SE1008**



**SE1009**



**SE1019**



**SE1020**



**SE1010**



**SE1022**



**SE1014**



**SE1021**



**SE1013**



**SE1011**



**SE1012**



**SE1023**



**SE1006**



**SE1005**



**SE1018**



**SE1003**



**SE1004**



**SE1002**



**SE1001**



**SE1015**



**SE1024**



**SE1016**



**SE1017**

**Felt**

**PARKHAUSE**

100% Wool



**F009**



**F008**



**F015**



**F003**



**F011**



infiniti

 design Nation

Colours shown are used for references only and may look different in reality.  
Please contact infiniti or your retailer to receive more information.

Infiniti reserves the right to make modifications and improvements of a technical or aesthetic nature to the products at any time without notice.

For further information, please visit [www.infinitidesign.it](http://www.infinitidesign.it)

INFINITI  
Via Ca' Leoncino, 2 - 31030  
Castello di Godego (TV) - ITALY  
-  
ph +39 0423 7616  
-  
[www.infinitidesign.it](http://www.infinitidesign.it)

Concept and Design  
THE TAILORS  
[thetailors.it](http://thetailors.it)

3D Images  
BRUGER STUDIO  
[brugerstudio.com](http://brugerstudio.com)

Colour separation and Print  
KAPPADUE Arti Grafiche  
[kappadue.net](http://kappadue.net)