

# Powder coated cast-iron, steel and aluminium

Ghisa, acciaio e alluminio verniciati

 design Nation

Indoor

TEXTURED MATT / GOFFRATA OPACA



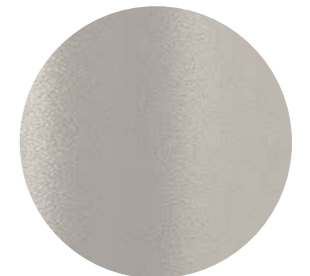
**BI100**  
White / Bianco



**BI200**  
White / Bianco



**BE100**  
Beige / Beige



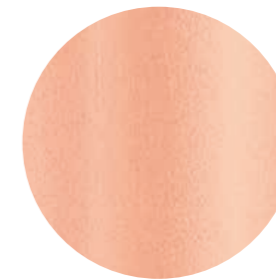
**BE200**  
Beige / Beige



**SA100**  
Sand / Sabbia



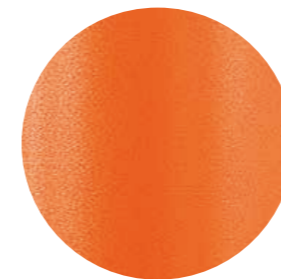
**SA200**  
Sand / Sabbia



**RA100**  
Pink / Rosa



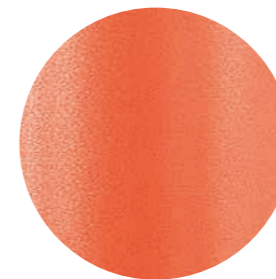
**GI100**  
Yellow / Giallo



**AR200**  
Orange / Arancio



**AR400**  
Orange / Arancio



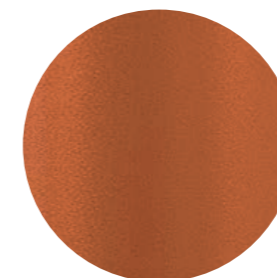
**AR500**  
Orange / Arancio



**RO200**  
Red / Rosso



**RO400**  
Red / Rosso



**TE**  
Terracotta / Terracotta

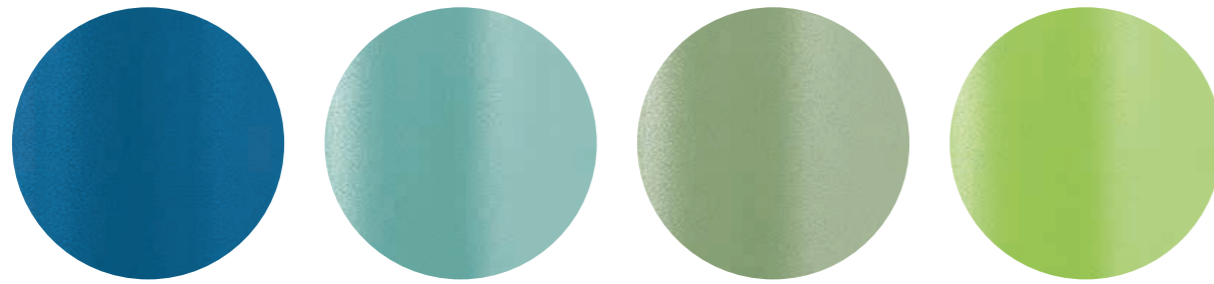


**RU**  
Rust / Ruggine



**MG**  
Brown / Marrone

TEXTURED MATT / GOFFRATA OPACA



BL300  
Blue / Blu

AZ100  
Light blue / Azzurro

VE100  
Sage green / Verde salvia

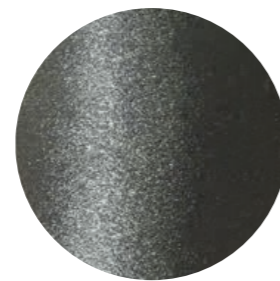
VE400  
Green / Verde



AG  
Aluminium / Alluminio

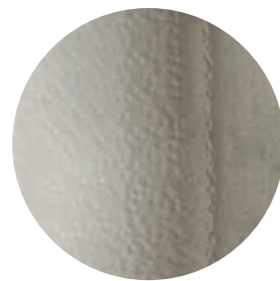


GA  
Anthracite grey / Grigio antracite



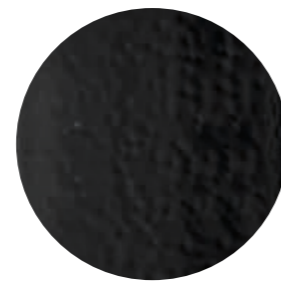
GN  
Natural grey / Grigio naturale

HAMMERED GLOSSY / BUCCIATA LUCIDA



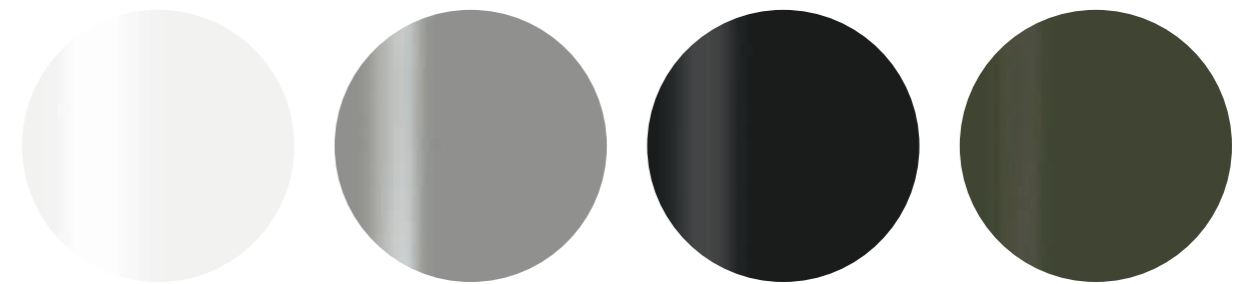
SA300  
Sand / Sabbia

HAMMERED MATT / BUCCIATA OPACA



\_NERO  
Black / Nero

SMOOTH MATT / LISCIA OPACA

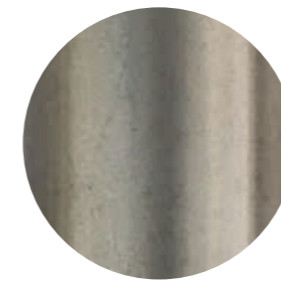


BI300  
White / Bianco

9007  
Aluminium / Alluminio

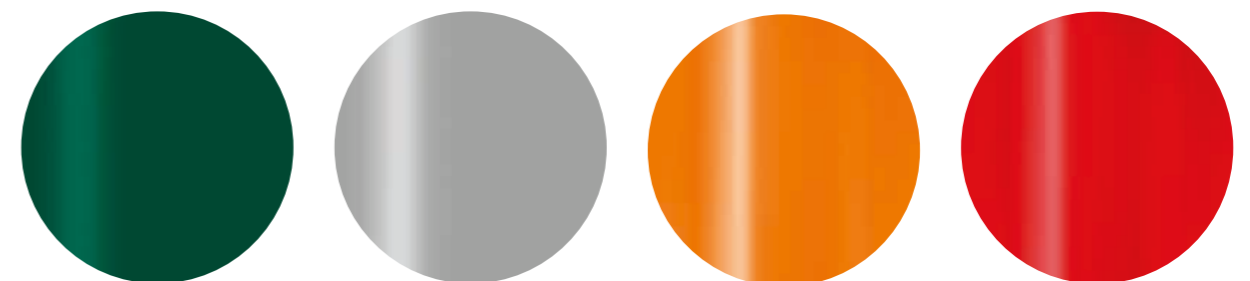
NEF  
Black / Nero  
Soft touch

VE300  
Forest green / Verde bosco  
Soft touch



TR  
Transparent / Trasparente

SMOOTH GLOSSY / LISCIA LUCIDA



6005  
Green / Verde

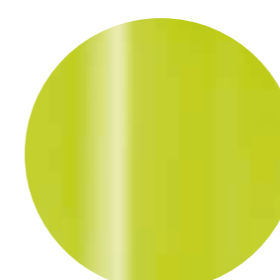
AL  
Aluminium / Alluminio

AR300  
Orange / Arancio

RO100  
Red / Rosso



BI400  
White / Bianco



VE200  
Green / Verde

# Outdoor

TEXTURED MATT / GOFFRATA OPACA



**BI100E**  
White / Bianco

**BI200E**  
White / Bianco

**BE100E**  
Beige / Beige

**BE200E**  
Beige / Beige

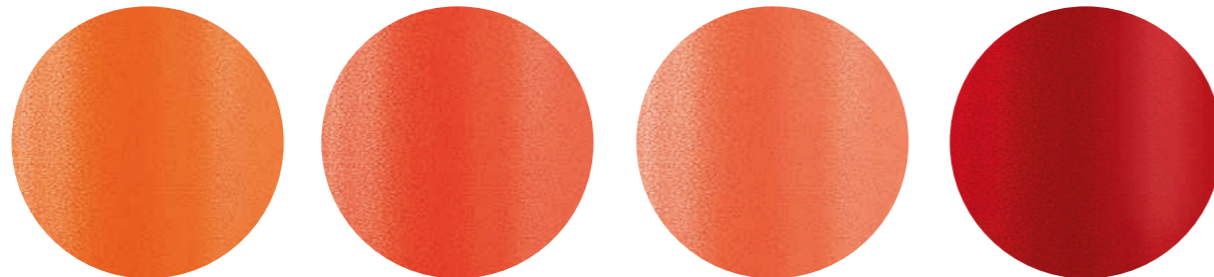


**SA100E**  
Sand / Sabbia

**SA200E**  
Sand / Sabbia

**RA100E**  
Pink / Rosa

**GI100E**  
Yellow / Giallo

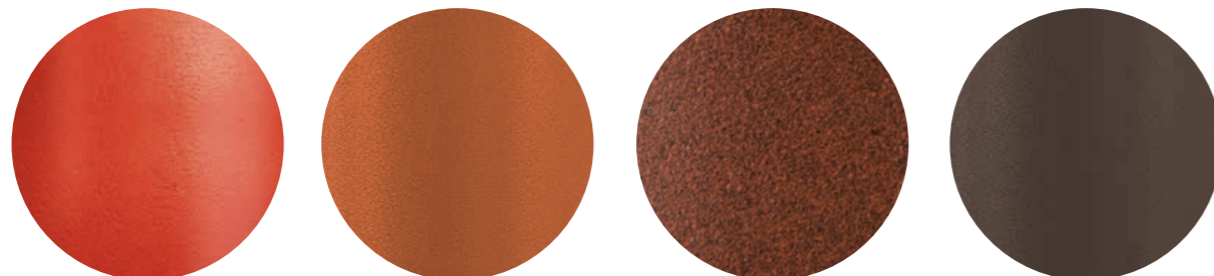


**AR200E**  
Orange / Arancio

**AR400E**  
Orange / Arancio

**AR500E**  
Orange / Arancio

**RO200E**  
Red / Rosso



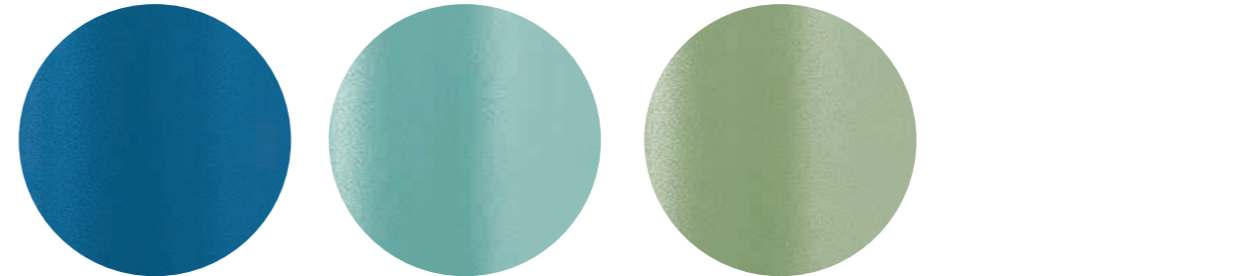
**RO400E**  
Red / Rosso

**TEE**  
Terracotta / Terracotta

**RUE**  
Rust / Ruggine

**MGE**  
Brown / Marrone

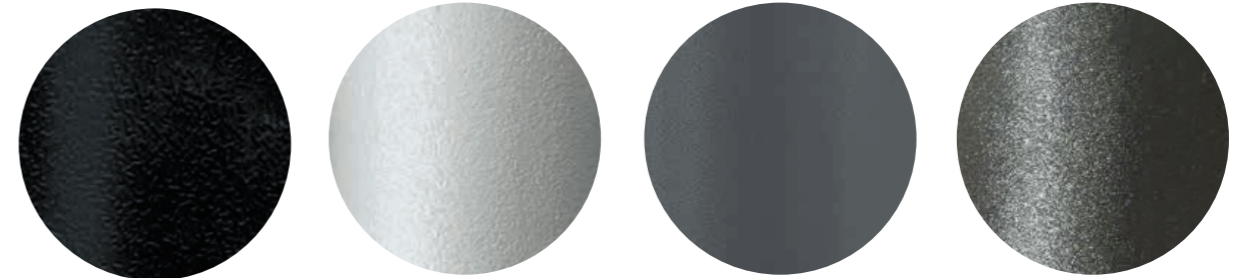
TEXTURED MATT / GOFFRATA OPACA



**BL300E**  
Blue / Blu

**AZ100E**  
Light blue / Azzurro

**VE100E**  
Sage green / Verde salvia



**NPE**  
Black / Nero

**AGE**  
Aluminium / Alluminio

**GAE**  
Anthracite grey / Grigio antracite

**GNE**  
Natural grey / Grigio naturale

SMOOTH MATT / LISCIA OPACA



SMOOTH GLOSSY / LISCIA LUCIDA

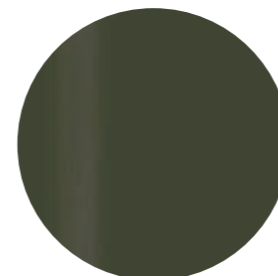


**9007E**  
Aluminium / Alluminio

**BI300E**  
White / Bianco

**6005E**  
Green / Verde

**ALE**  
Aluminium / Alluminio

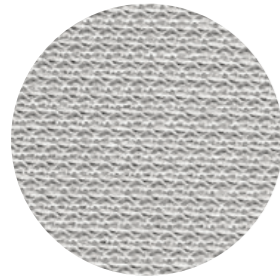


**VE300E**  
Forest green / Verde bosco  
Soft touch

# Fabrics

## Tessuti

CATEGORY B / CATEGORIA B



B 01



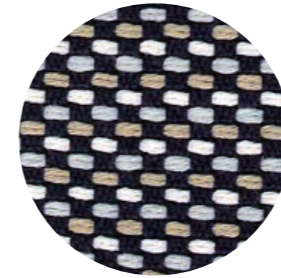
B 02

technical specifications / specifiche tecniche

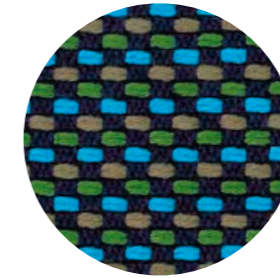


- **COMPOSITION / COMPOSIZIONE**  
100% Nylon (Support film PVC)
- **ABRASION / ABRASIONE**  
>50.000 cycles, Martindale (UNI EN ISO 12947:00)
- **RUBBING FASTNESS / SOLIDITÀ ALLO SFREGAMENTO**  
5, scale 1-5 (UNI EN ISO 105 X12:97)
- **PILLING**  
5, scale 1-5 (UNI EN ISO 12945-2:00)
- **LIGHT FASTNESS / SOLIDITÀ ALLA LUCE**  
5, scale 1-8 (UNI EN ISO 105-B02:01)

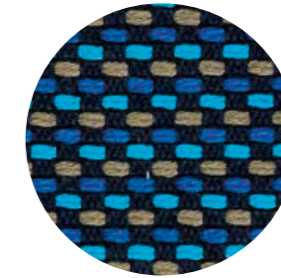
CATEGORY C / CATEGORIA C



C 37



C 38

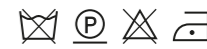


C 39



C 36

technical specifications / specifiche tecniche

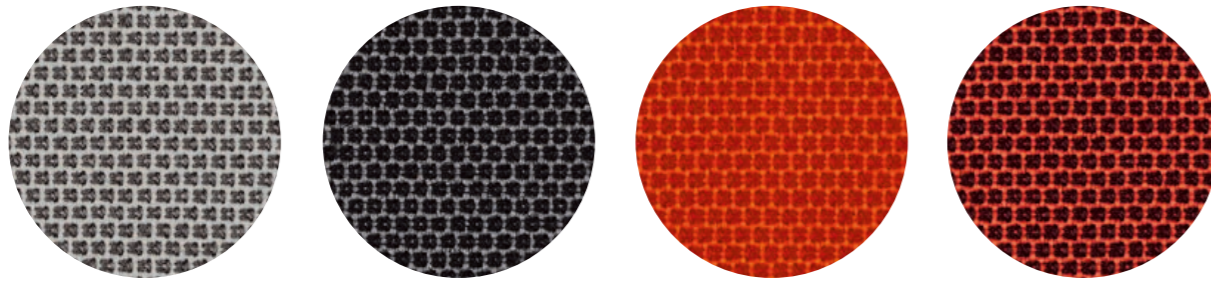


- **COMPOSITION / COMPOSIZIONE**  
94% Cotton  
6% Polyamide
- **ABRASION / ABRASIONE**  
40.000 cycles, Martindale (BS EN ISO 12947-2 1999)
- **RUBBING FASTNESS / SOLIDITÀ ALLO SFREGAMENTO**  
Dry 4-5 and Wet 2-3, scale 1-5 (BS EN ISO 105-X12:1995)
- **PILLING**  
4, scale 1-5 (BS EN ISO 12945-2:2001 to 5.000 cycles)
- **LIGHT FASTNESS / SOLIDITÀ ALLA LUCE**  
4-5 (light colours)  
5 (medium-dark colours) (BS EN ISO 105-B02:2001)

only for collection / solo per collezione



Island

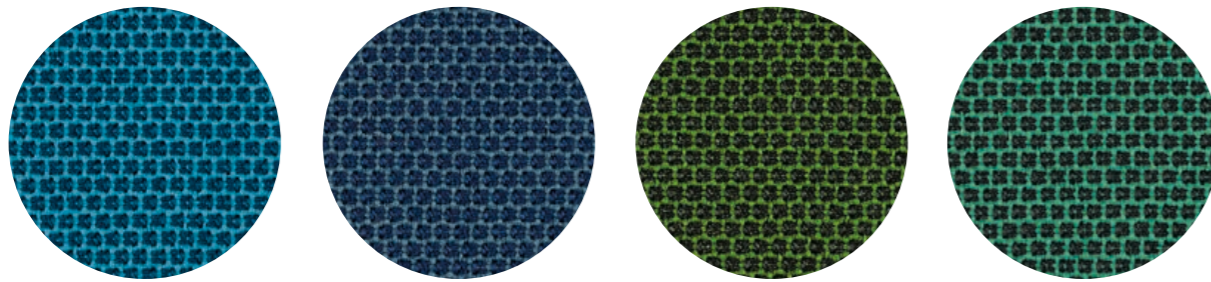


C 101

C 86

C 85

C 89



C 83

C 100

C 84

C 88



C 87

technical specifications / specifiche tecniche

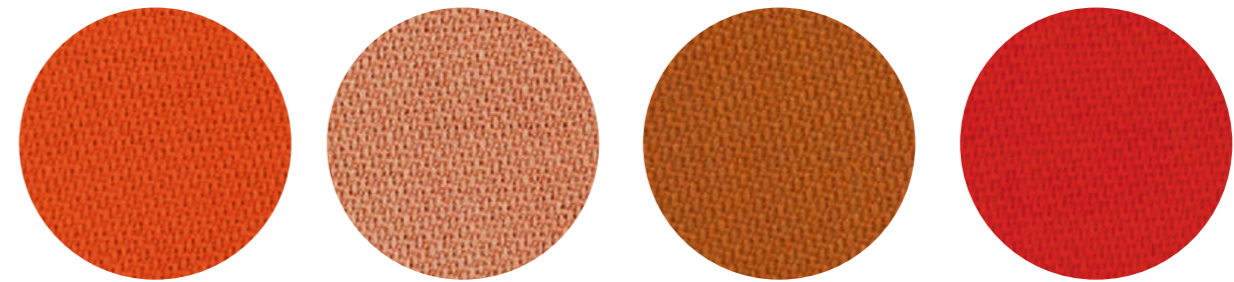


- COMPOSITION / COMPOSIZIONE  
54% New Zealand Wool  
44% Post-consumer recycled, polyester  
2% Polyamide
- ABRASION / ABRASIONE  
100.000 cycles, Martindale  
(EN ISO 12947-2)

- RUBBING FASTNESS / SOLIDITÀ ALLO SFREGAMENTO  
Dry and Wet 4-5, scale 1-5  
(EN ISO 105-X12:1995)
- PILLING  
4-5, scale 1-5 (EN ISO 12945-2)
- LIGHT FASTNESS / SOLIDITÀ ALLA LUCE  
5-7, scale 1-8 (EN ISO 105-B02)

- FLAME RESISTANCE  
RESISTENZA AL FUOCO  
BS EN 1021 1&2  
BS EN 1021-1  
BS 5852 Part 1 0, 1  
US CA TB 117-2013

- APPROVED / OMOLOGATO

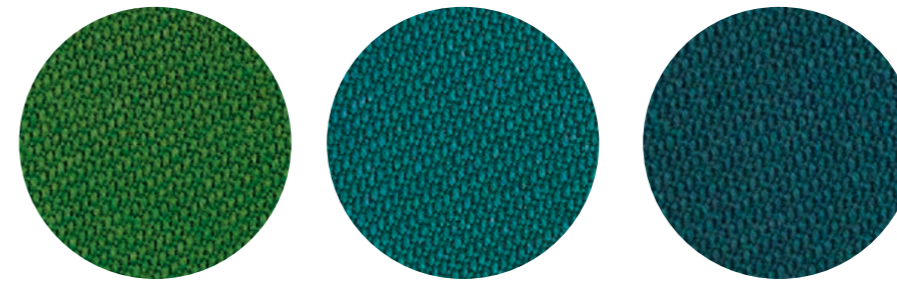


C 110

C 111

C 112

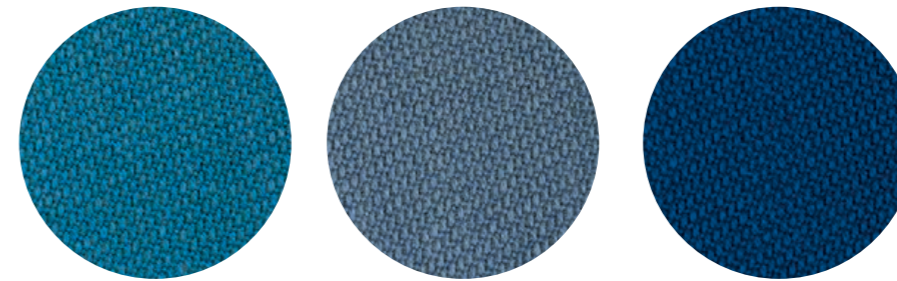
C 113



C 117

C 118

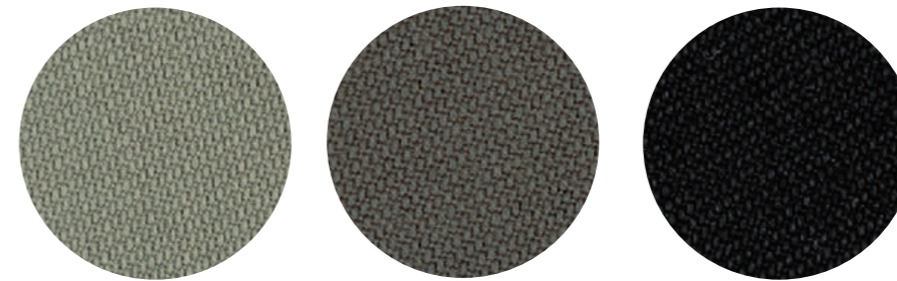
C 119



C 120

C 121

C 122



C 114

C 115

C 116

technical specifications / specifiche tecniche

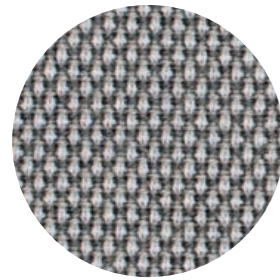
- APPROVED / OMOLOGATO



- COLLECTION / COLLEZIONE  
**svensson-SEMI**
- COMPOSITION / COMPOSIZIONE  
85% Wool, 15% Polyamide
- ABRASION / ABRASIONE  
100.000 cycles,  
Martindale  
(EN ISO 12947-2)
- RUBBING FASTNESS  
SOLIDITÀ ALLO SFREGAMENTO  
Dry 4 and Wet 3-4, scale 1-5  
(EN ISO 105-X12)
- LIGHT FASTNESS  
SOLIDITÀ ALLA LUCE  
5-7, scale 1-8  
(EN ISO 105-B02)
- FLAME RESISTANCE / RESISTENZA AL FUOCO  
BS 5852 Crib 5  
EN ISO 1021 Part 1&2  
IMO FTP Code 2010: Part 8  
UNI 9175 e UNI 9175/FA1 Classe 1 IM



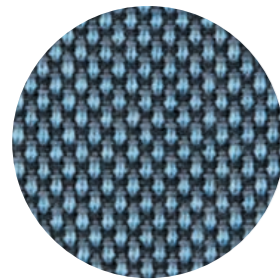
CATEGORY D / CATEGORIA D



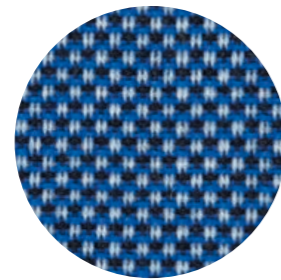
D 40



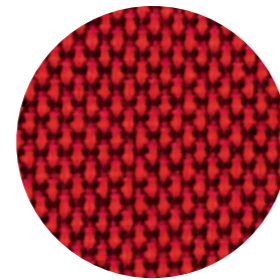
D 41



D 43



D 44



D 42

technical specifications / specifiche tecniche

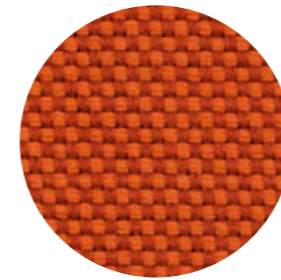


- **COMPOSITION / COMPOSIZIONE**  
88% New Zealand Wool  
12% Polyamide
- **ABRASION / ABRASIONE**  
100.000 cycles, Martindale  
(EN ISO 12947-2)
- **RUBBING FASTNESS / SOLIDITÀ ALLO SFREGAMENTO**  
Dry and Wet 4-5, scale 1-5  
(EN ISO 105-X12)
- **PILLING**  
4-5, scale 1-5 (EN ISO 12945-2)
- **LIGHT FASTNESS / SOLIDITÀ ALLA LUCE**  
5-7, scale 1-8 (EN ISO 105-B02)
- **FLAME RESISTANCE / RESISTENZA AL FUOCO**  
BS EN 1021 1&2  
BS 5852 Part 1 0, 1  
UNI 9175 Classe 1 IM  
US CA TB 117-2013

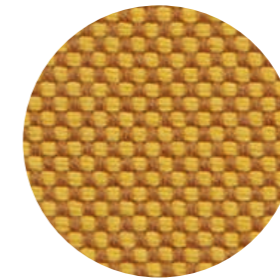
- APPROVED / OMOLOGATO



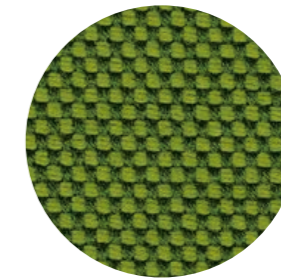
CATEGORY G / CATEGORIA G



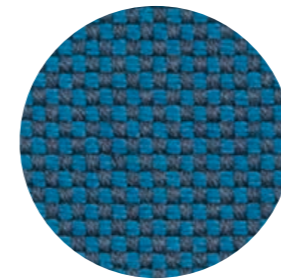
G 170



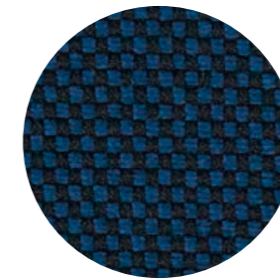
G 171



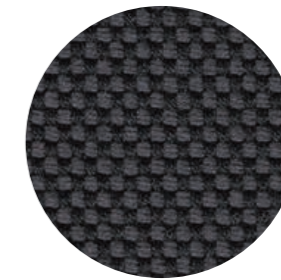
G 172



G 173



G 174



G 175



G 176

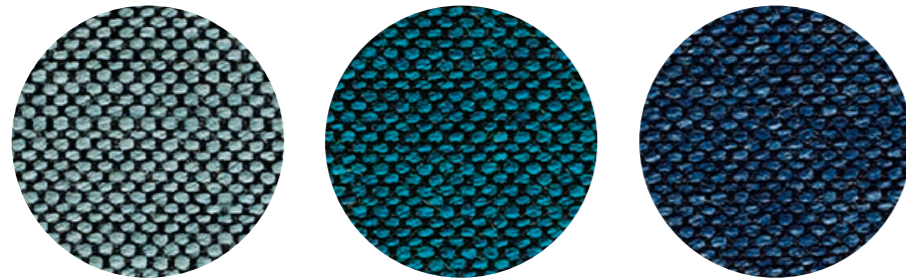
technical specifications / specifiche tecniche



- **COMPOSITION / COMPOSIZIONE**  
96% Virgin Wool  
4% Polyamide
- **ABRASION / ABRASIONE**  
90.000 cycles, Martindale  
(DIN EN ISO 12947-2)
- **PILLING**  
4-5, scale 1-5 (EN ISO 12945-2)
- **LIGHT FASTNESS / SOLIDITÀ ALLA LUCE**  
5-8, scale 1-8 (EN ISO 105-B02)
- **SOUND ABSORPTION / ASSORBIMENTO ACUSTICO**  
folded:  $\alpha_w = 0.95$  Class A (ISO 11654)
- **FLAME RESISTANCE / RESISTENZA AL FUOCO**  
BS 5852:1979 (Part 1)  
BS 5852:2006 (Part 2) Crib 5  
DIN 4102-1 B2
- **EN 13501-1**  
EN 1021 -1 and -2  
FAR 25.853 (12 sec. vertical)  
IMO: 2014/90/EU (MED)  
US CA TB 117-2013

- APPROVED / OMOLOGATO

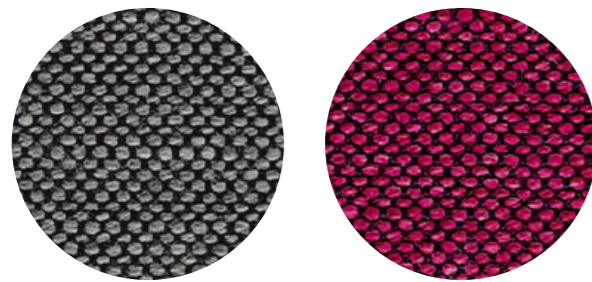




G 154

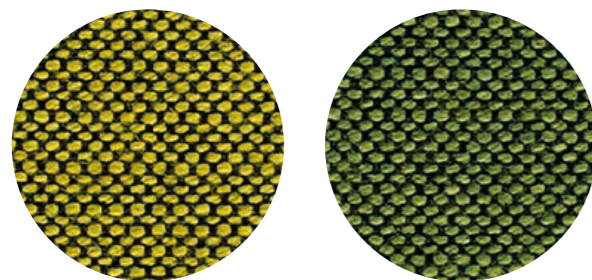
G 155

G 156



G 151

G 150



G 152

G 153

technical specifications / specifiche tecniche

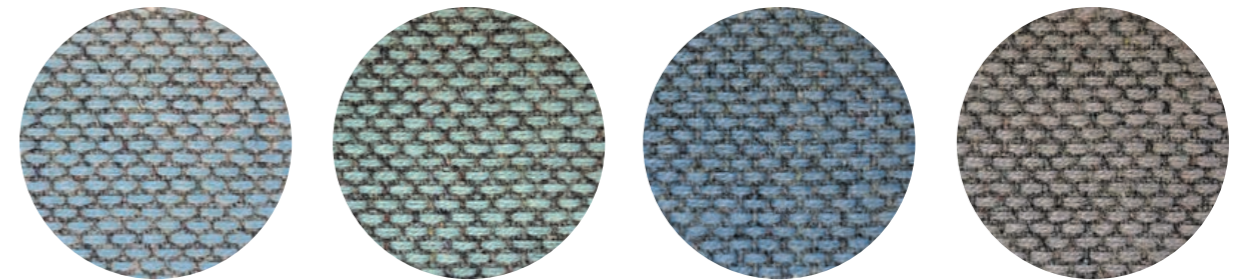


- COLLECTION / COLLEZIONE  
**svensson - BALANCE**
- COMPOSITION / COMPOSIZIONE  
82% Wool  
12% Rami  
6% Polyamide

- ABRASION / ABRASIONE  
100.000 cycles, Martindale (EN ISO 12947-2)
- RUBBING FASTNESS / SOLIDITÀ ALLO SFREGAMENTO  
Dry 4 and Wet 3-4, scale 1-5  
(EN ISO 105-X12)
- LIGHT FASTNESS / SOLIDITÀ ALLA LUCE  
5-7, scale 1-8 (EN ISO 105-B02)

- FLAME RESISTANCE / RESISTENZA AL FUOCO  
BS 5852 Crib 5  
EN ISO 1021 Part 1&2  
IMO FTP Code 2010: Part 8  
UNI 9175 Classe 1 IM  
US CA TB 117-2013

- APPROVED / OMOLOGATO

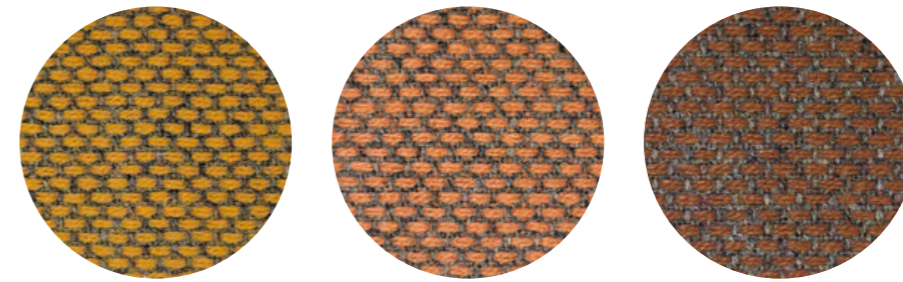


G 143

G 145

G 144

G 146



G 140

G 141

G 142

technical specifications / specifiche tecniche



- COLLECTION / COLLEZIONE  
**kvadrat - RE-WOOL**  
DESIGNER Margrethe Odgaard
- COMPOSITION / COMPOSIZIONE  
45% Recycled wool  
45% New wool  
10% Nylon
- ABRASION / ABRASIONE  
50.000 cycles, Martindale  
(DS/EN ISO 12947-2:2016)

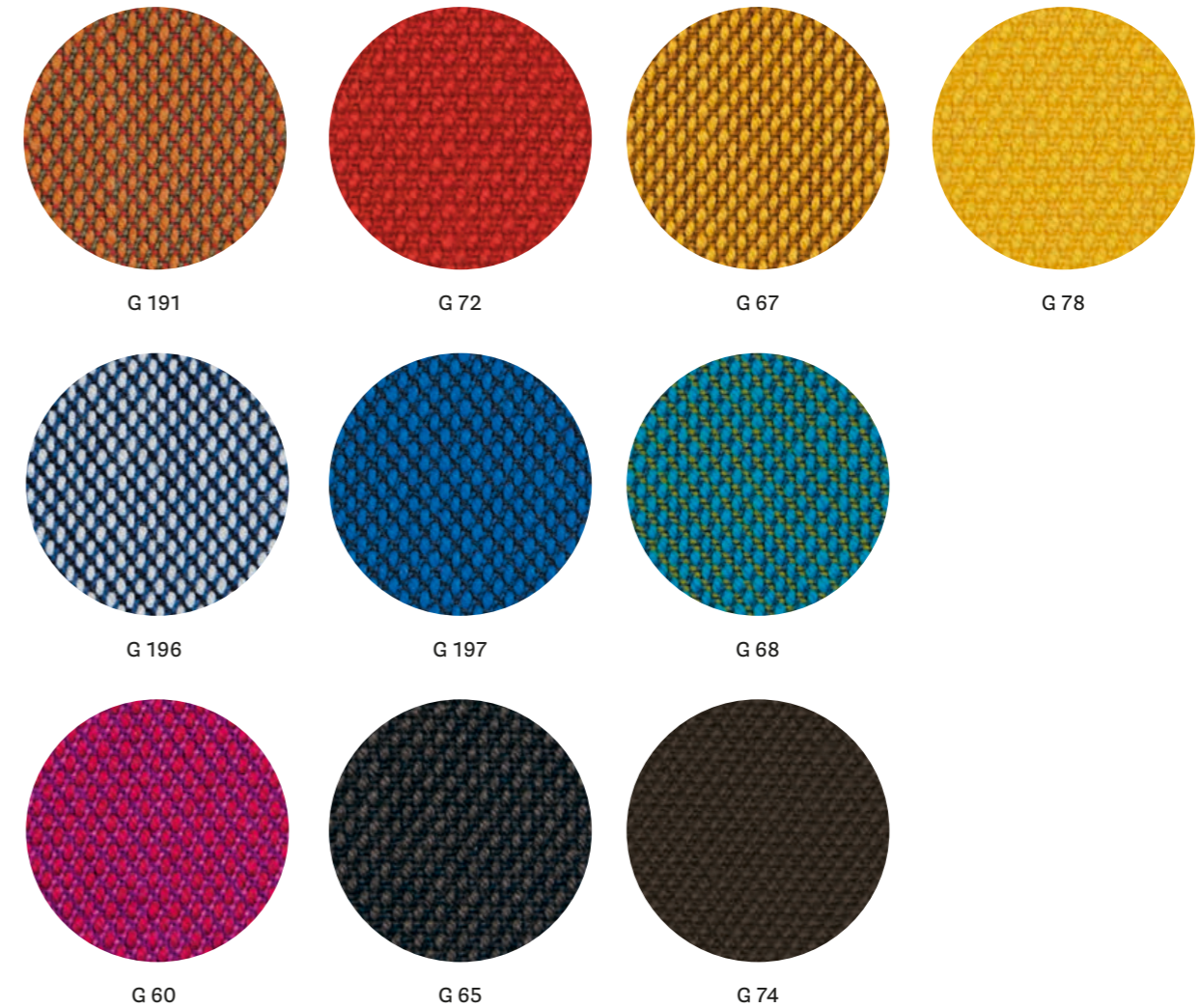
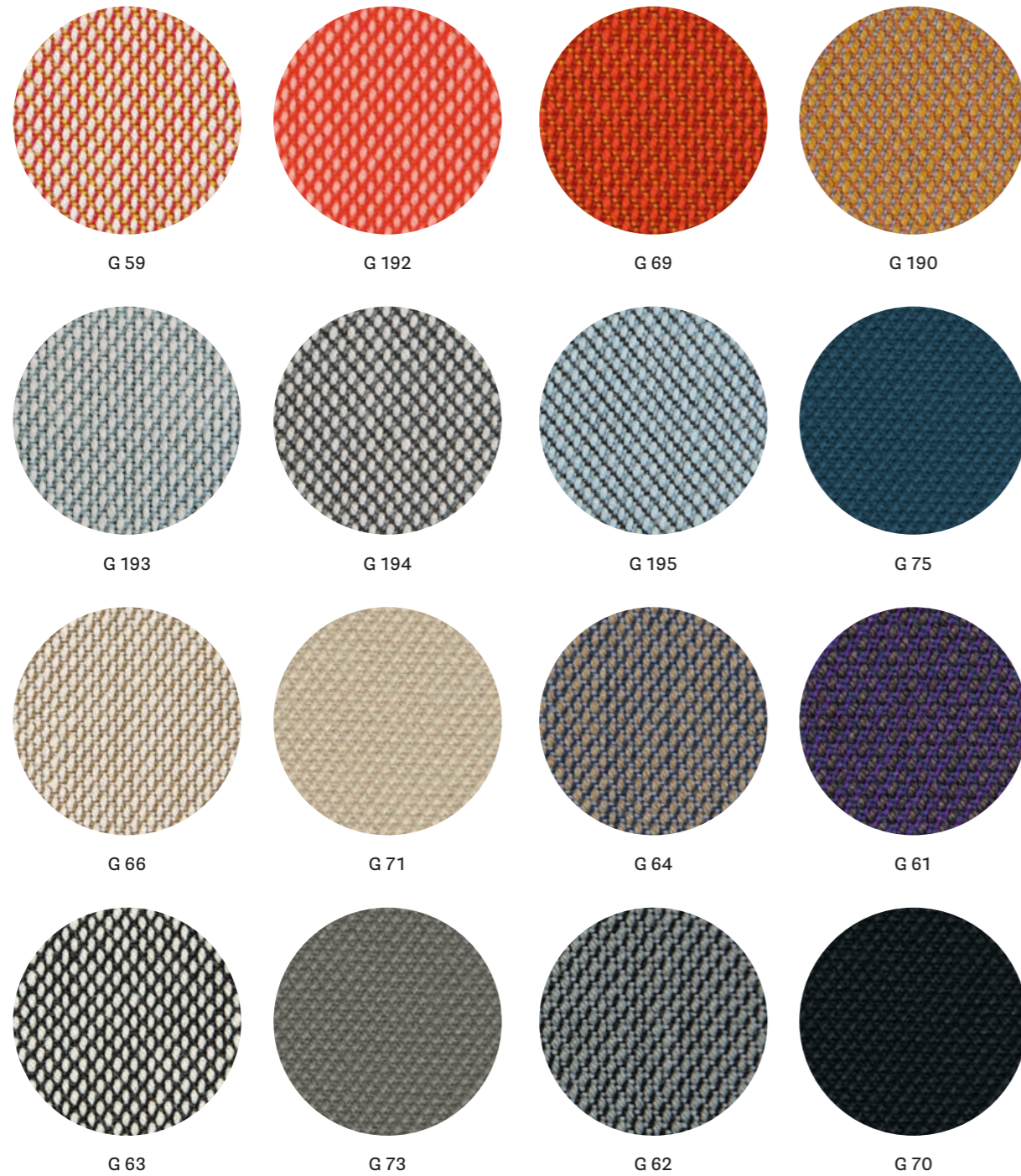
- RUBBING FASTNESS / SOLIDITÀ ALLO SFREGAMENTO  
Dry and Wet 4-5, scale 1-5  
(ISO 105-X12)
- PILLING  
4, scale 1-5 (EN ISO 12945)
- LIGHT FASTNESS / SOLIDITÀ ALLA LUCE  
5-7, scale 1-8 (ISO 105-B02:2014)
- SOUND ABSORPTION / ASSORBIMENTO ACUSTICO  
folded:  $\alpha_w = 0.75$  Class C (ISO 11654)

- FLAME RESISTANCE / RESISTENZA AL FUOCO  
AS/NZS 1530.3  
BS 5852 Part 1  
BS 5852 Crib 5 with treatment  
BS 5852 IGNITION SOURCE 3  
EN 1021 - 1/2  
IMO FTP Code 2010: Part 8  
NF D60-013  
ÖNORM B1/Q1  
UNI 9175 Classe 1IM  
US CA TB 117-2013

- APPROVED / OMOLOGATO







technical specifications / specifiche tecniche



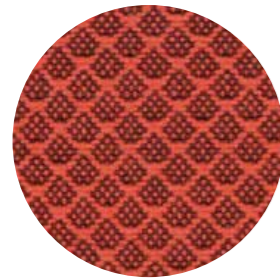
- COLLECTION / COLLEZIONE  
**kvadrat**  
STEELCUT TRIO 3  
except  
G61, G60, G68: STEELCUT TRIO 2  
G70+G78: STEELCUT 2  
DESIGNERS Dijkmeijer & Ridolfo
- COMPOSITION / COMPOSIZIONE  
90% New wool  
10% Nylon
- ABRASION / ABRASIONE  
100.000 cycles,  
for G70+G78: 80.000 cycles  
Martindale (DS/EN ISO 12947-2:2016)

- PILLING  
4, scale 1-5  
for G70+G78: 3-4, scale 1-5  
(EN ISO 12945)
- LIGHT FASTNESS / SOLIDITÀ ALLA LUCE  
5-7, scale 1-8 (EN ISO 105-B02)
- SOUND ABSORPTION / ASSORBIMENTO ACUSTICO  
folded:  $\alpha_w=0.95$  Class A  
for G70+G78: folded:  $\alpha_w=0.80$  Class B  
(ISO 11654)
- FLAME RESISTANCE / RESISTENZA AL FUOCO  
AS/NZS 1530.3  
AS/NZS 3837 Class 2  
BS 5852 Part 1

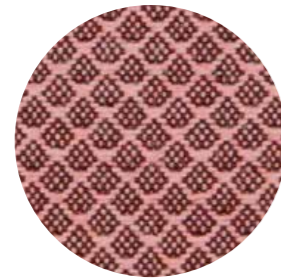
BS 5852 Crib 5 with treatment  
DIN 4102 B2  
EN 1021 - 1/2  
IMO FTP Code 2010: Part 8  
NF D60-013  
NFPA 260  
ÖNORM B1/Q1  
SN 198 898 5.3 with treatment  
UNI 9175 Classe 1 IM  
US CA TB 117-2013

- APPROVED / OMOLOGATO





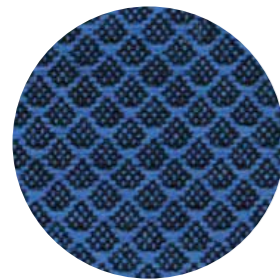
G 200



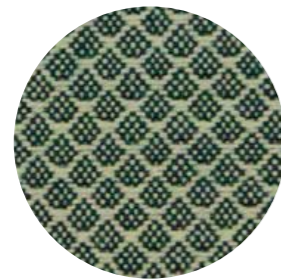
G 201



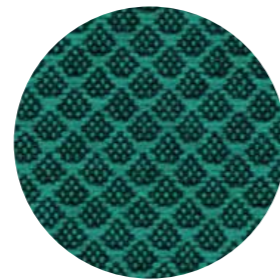
G 202



G 203



G 204



G 205

technical specifications / specifiche tecniche

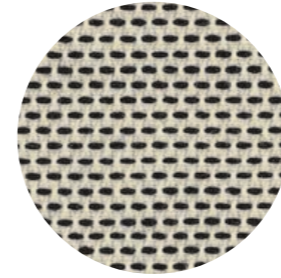


- COLLECTION / COLLEZIONE  
**kvadrat** - JAALI  
DESIGNER Doshi Levien
- COMPOSITION / COMPOSIZIONE  
92% New wool  
8% Nylon
- ABRASION / ABRASIONE  
80.000 cycles, Martindale  
(EN ISO 12947)

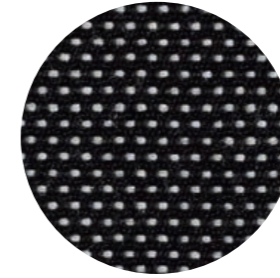
- RUBBING FASTNESS / SOLIDITÀ ALLO SFREGAMENTO  
Dry 4-5 and Wet 3-5, scale 1-5  
(ISO 105-X12)
- PILLING  
4, scale 1-5 (EN ISO 12945)
- LIGHT FASTNESS / SOLIDITÀ ALLA LUCE  
6-7, scale 1-8 (ISO 105-B02)

- FLAME RESISTANCE / RESISTENZA AL FUOCO  
AS/NZS 1530.3  
BS 5852 Part 1  
BS 5852 Crib 5 with treatment  
BS 5852 ignition source 3  
EN 1021-1/2  
IMO FTP Code 2010: Part 8  
NF D60-013  
SN 198 898 5.3 with treatment  
UNI 9175 Classe 1IM  
US CA TB 117-2013

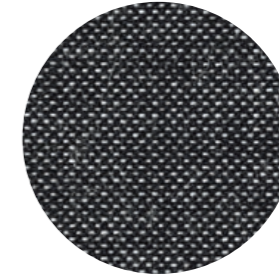
- APPROVED / OMOLOGATO



G 101



G 100



G 102

technical specifications / specifiche tecniche



- COLLECTION / COLLEZIONE  
**kvadrat** - BASEL  
DESIGNERS Herzog & de Meuron
- COMPOSITION / COMPOSIZIONE  
90% New wool  
10% Nylon
- ABRASION / ABRASIONE  
50.000 cycles,  
Martindale (EN ISO 12947-2:1998)

- PILLING  
4, scale 1-5 (EN ISO 12945)
- LIGHT FASTNESS / SOLIDITÀ ALLA LUCE  
6-7, scale 1-8 (ISO 105-B02)
- FLAME RESISTANCE / RESISTENZA AL FUOCO  
AS/NZS 3837 Class 2  
BS 5852 Part 1  
BS 5852 Crib 5 with treatment

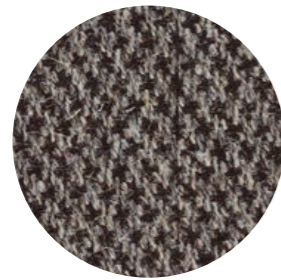
- DIN 4102 B2  
EN 1021 - 1/2  
IMO FTP Code 2010: Part 8  
NFPA 260  
NF D60-013  
ÖNORM B1/Q1  
SN 198 898 5.3 with treatment  
UNI 9175 Classe 1 IM  
US CA TB 117-2013

- APPROVED / OMOLOGATO





G 120



G 121



G 122

technical specifications / specifiche tecniche



• COLLECTION / COLLEZIONE

**kvadrat** - MOLLY 2  
DESIGNER Åsa Pärson

• COMPOSITION / COMPOSIZIONE

100% New wool

• ABRASION / ABRASIONE

75-100.000 cycles,  
Martindale (EN ISO 12947-2:1998)

• PILLING

3-4, scale 1-5 (EN ISO 12945)

• LIGHT FASTNESS / SOLIDITÀ ALLA LUCE

6-7, scale 1-8 (ISO 105-B02)

• FLAME RESISTANCE / RESISTENZA AL FUOCO

BS 5852 Part 1  
BS 5852 Crib 5 with treatment  
DIN 4102 B2

EN 1021 - 1/2

IMO FTP Code 2010: Part 8

NFPA 260

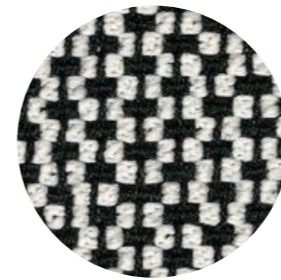
NF D60-013

ÖNORM B1/Q1

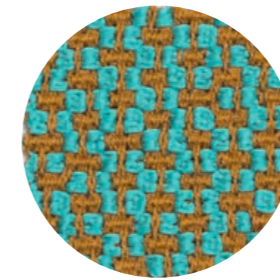
UNI 9175/UNI 9176 Classe 1 IM

US CA TB 117-2013

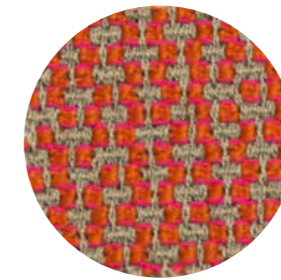
• APPROVED / OMOLOGATO



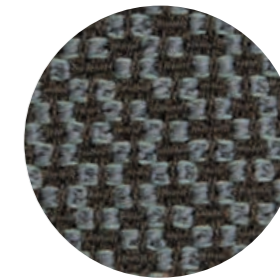
G 130



G 131



G 132



G 133

technical specifications / specifiche tecniche



• COMPOSITION / COMPOSIZIONE

95% Virgin Wool  
5% Polyamide

• ABRASION / ABRASIONE

52.000 cycles, Martindale  
(DIN EN ISO 12947-2)

• PILLING

4-5, scale 1-5 (EN ISO 12945-2)

• LIGHT FASTNESS / SOLIDITÀ ALLA LUCE

5-8, scale 1-8 (EN ISO 105-B02)

• SOUND ABSORPTION / ASSORBIMENTO ACUSTICO

folded:  $\alpha_w = 0.85$  Class B (ISO 11654)

• FLAME RESISTANCE / RESISTENZA AL FUOCO

BS 5852:1979 (Part 1)  
BS 5852:2006 (Part 2) Crib 5  
DIN 4102-1 B2

EN 1021 -1 and -2

EN 13501-1

FAR 25.853 (12 sec. vertical)

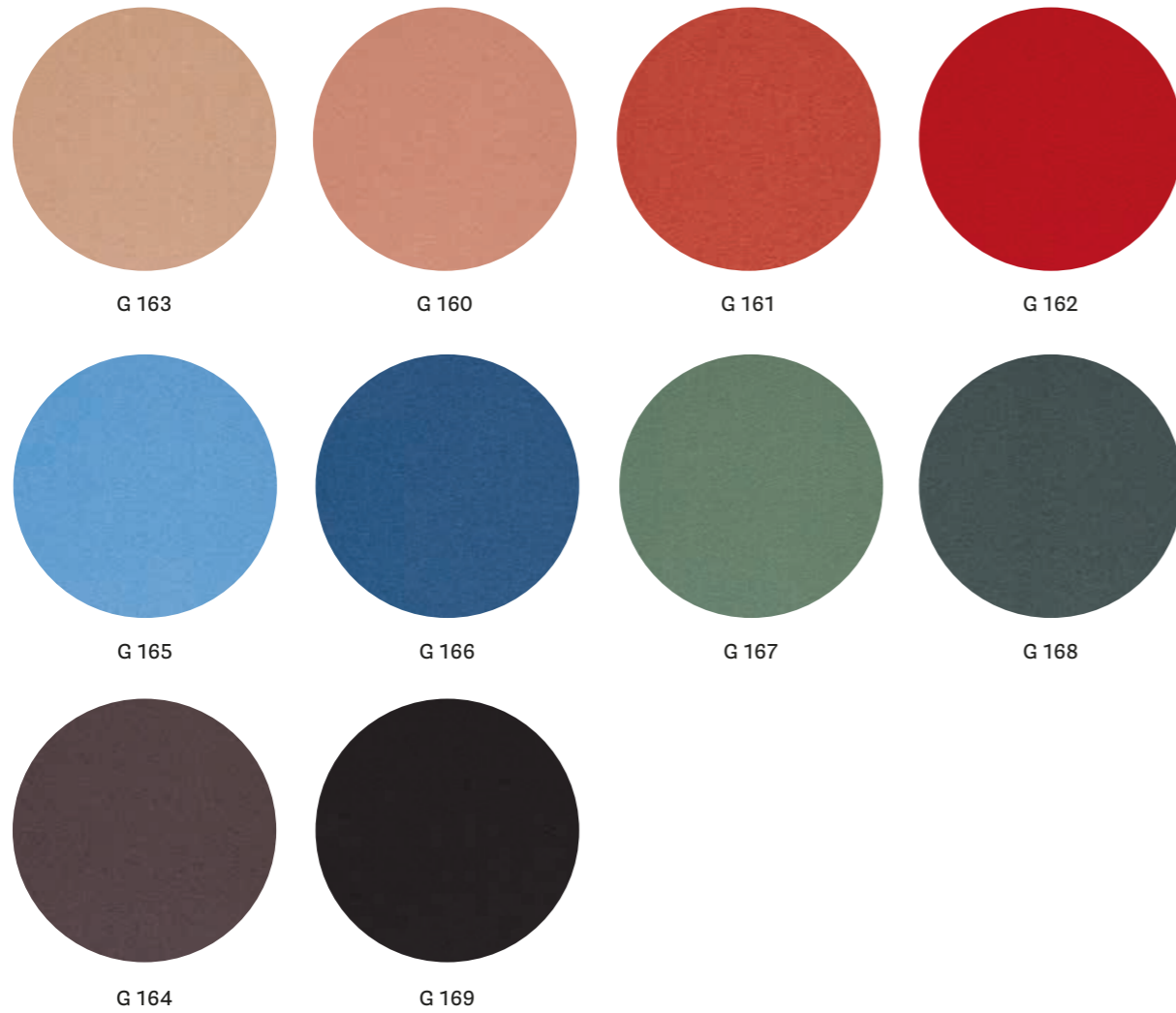
IMO: 2014/90/EU (MED)

UNI 9175 Classe 1 IM

US CA TB 117-2013

• APPROVED / OMOLOGATO





technical specifications / specifiche tecniche

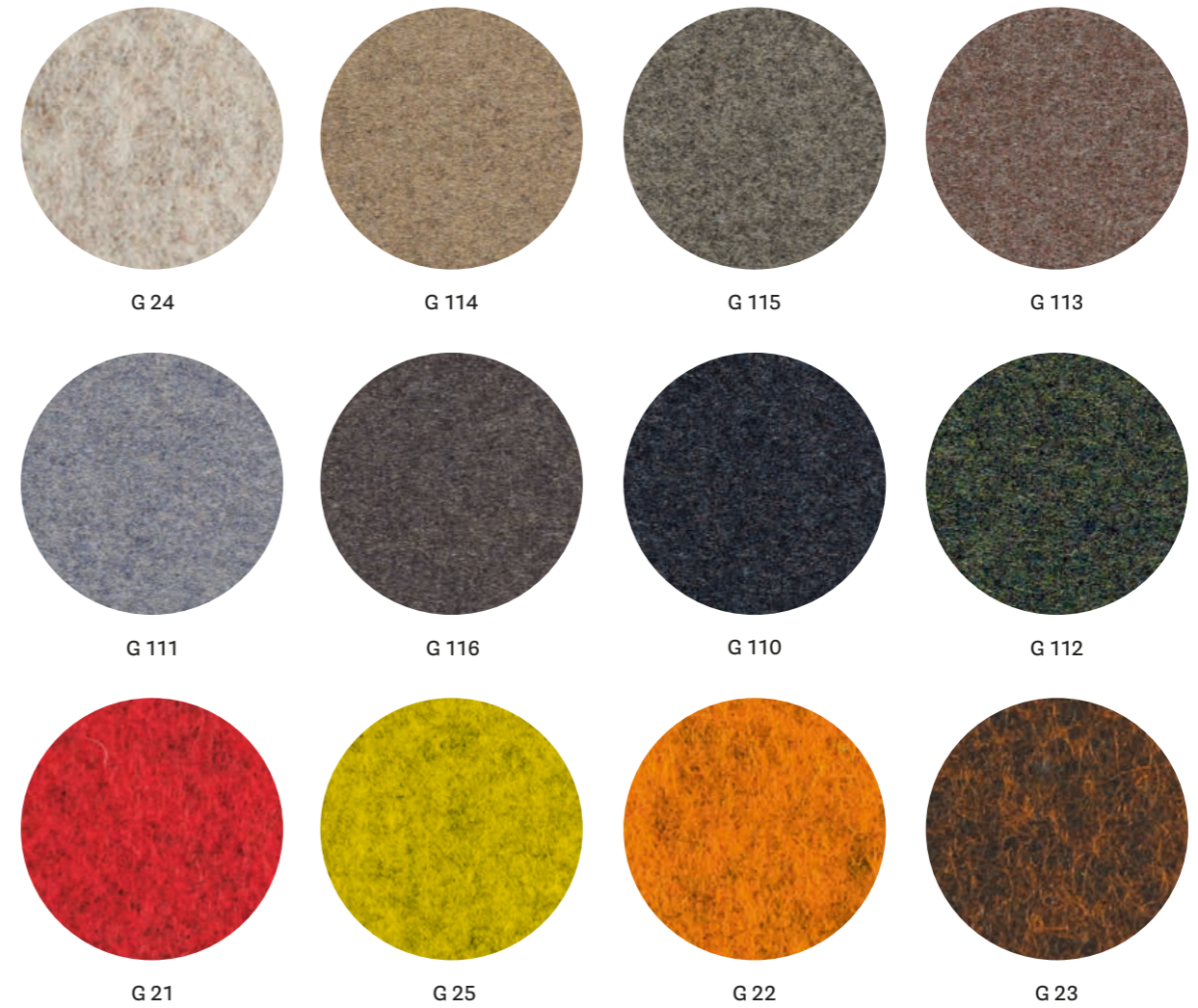


- COLLECTION / COLLEZIONE  
**kvadrat** - HERO  
DESIGNER Patricia Urquiola
- COMPOSITION / COMPOSIZIONE  
96% New wool  
4% Nylon
- ABRASION / ABRASIONE  
45.000 cycles, Martindale  
(EN ISO 12947)
- PILLING  
3-4, scale 1-5 (EN ISO 12945)

- LIGHT FASTNESS / SOLIDITÀ ALLA LUCE  
5-6, scale 1-8 (ISO 105-B02)
- SOUND ABSORPTION / ASSORBIMENTO ACUSTICO  
folded:  $\alpha_w = 0.75$  Class C (ISO 11654)
- FLAME RESISTANCE / RESISTENZA AL FUOCO  
AS/NZS 3837 Class 2  
BS 5852 Crib 5 with treatment  
BS 5852 Part 1  
DIN 4102 B2  
EN 1021 - 1/2  
IMO FTP Code 2010: Part 8

NF D60-013  
NFPA 260  
SN 198 898 5.3 with treatment  
UNI 9175 Classe 1 IM  
US CA TB 117-2013

- APPROVED / OMOLOGATO



technical specifications / specifiche tecniche



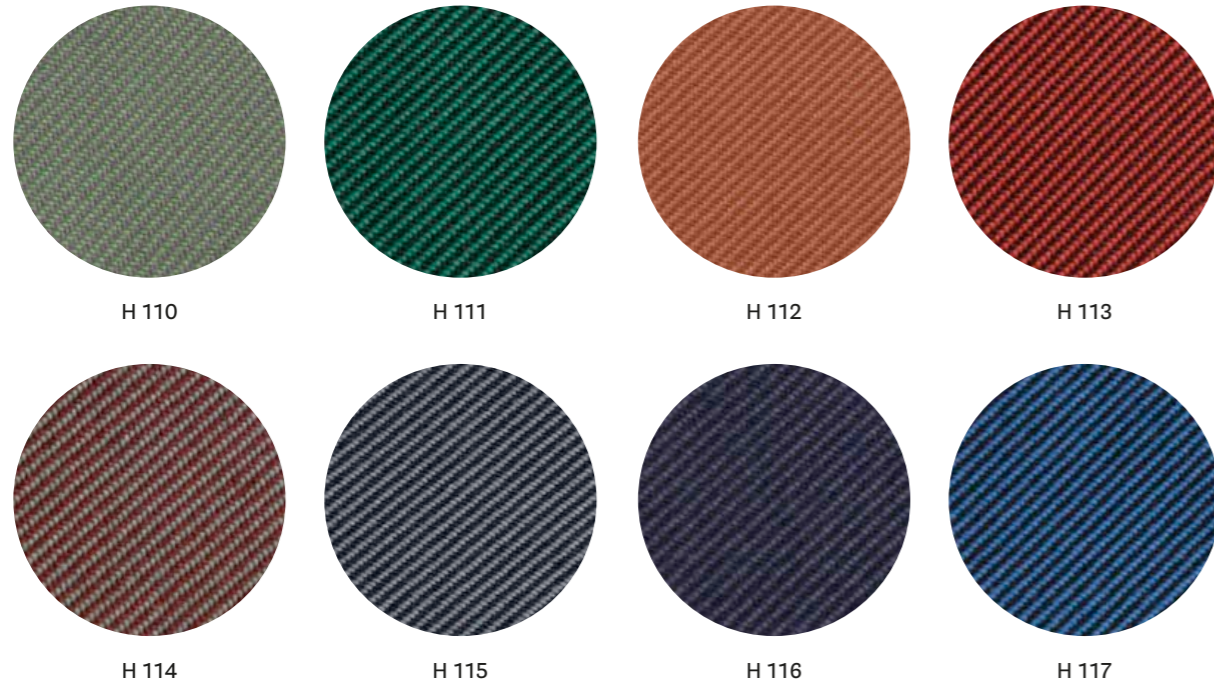
- COLLECTION / COLLEZIONE  
**kvadrat**  
G21, G22, G25: DIVINA MELANGE 2  
G23, G24: DIVINA MELANGE 3  
G110+G116: DIVINA MD  
DESIGNER Finn Skødt
- COMPOSITION / COMPOSIZIONE  
100% New Wool
- ABRASION / ABRASIONE  
45.000 cycles, Martindale  
(EN ISO 12947)
- PILLING  
3, scale 1-5 (EN ISO 12945)

- LIGHT FASTNESS / SOLIDITÀ ALLA LUCE  
5-7, scale 1-8 (ISO 105-B02)
- SOUND ABSORPTION / ASSORBIMENTO ACUSTICO  
folded:  $\alpha_w = 0.70$  Class C (ISO 11654)
- FLAME RESISTANCE / RESISTENZA AL FUOCO  
AS/NZS 1530.3  
BS 5852 Crib 5  
BS 5852 Part 1  
BS 5867 part 2 type B (only for G23, G24)  
DIN 4102 B2  
EN 1021-1/2  
EN 13501, C-s1, d0, glued  
IMO FTP Code 2010: Part 8

NF D60-013  
NFPA 260  
ÖNORM B1/ Q1  
SN 198 898 5.3 with treatment  
UNI 9175 Classe 1 IM  
US CA TB 117-2013

- APPROVED / OMOLOGATO



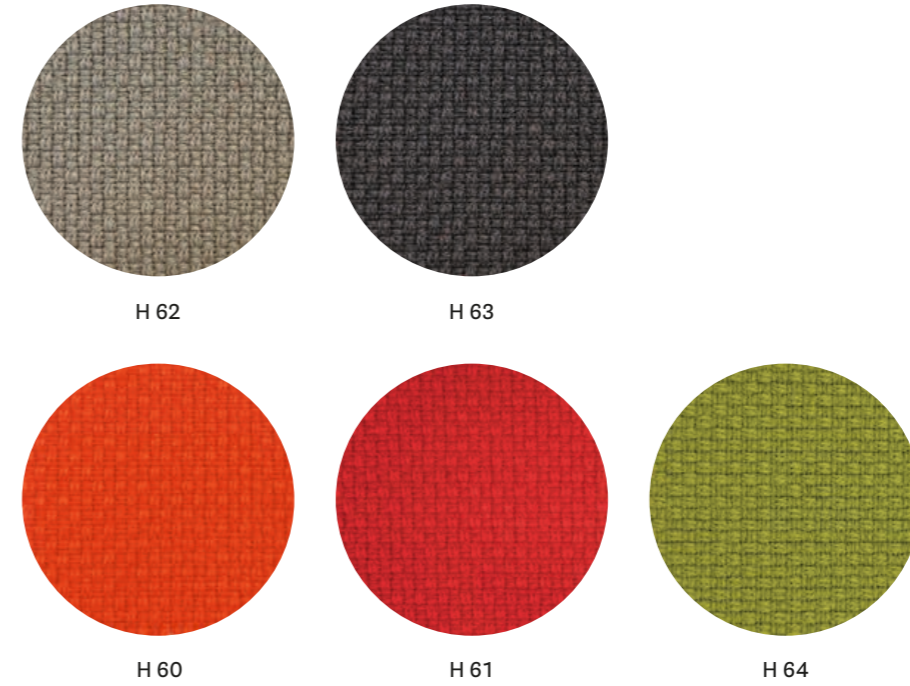


technical specifications / specifiche tecniche



- COLLECTION / COLLEZIONE  
**kvadrat** - RELATE  
DESIGNER Patricia Urquiola
- COMPOSITION / COMPOSIZIONE  
100% TREVIRA CS®
- ABRASION / ABRASIONE  
80.000 cycles, Martindale  
(EN ISO 12947)
- RUBBING FASTNESS / SOLIDITÀ ALLO SFREGAMENTO  
Dry and Wet 4-5, scale 1-5  
(EN ISO 105-X12)
- PILLING  
4-5, scale 1-5 (EN ISO 12945)
- LIGHT FASTNESS / SOLIDITÀ ALLA LUCE  
5-7, scale 1-8 (EN ISO 105-B02)
- SOUND ABSORPTION / ASSORBIMENTO ACUSTICO  
folded:  $\alpha_w=0.50$  Class D (EN ISO 354)
- FLAME RESISTANCE / RESISTENZA AL FUOCO  
AS/NZS 3837, class 2  
BS 5852 Crib 5  
BS 5852 Part 1 with treatment  
DIN 4102 B1  
EN 1021-1/2  
IMO FTP Code 2010: Part 8  
NF D60-013  
NF P92 507 M1  
NFPA 701  
ÖNORM B1/Q1  
SN 198 898 5.2  
UNI 9177 Classe 1  
US CA TB 117-2013

- APPROVED / OMOLOGATO



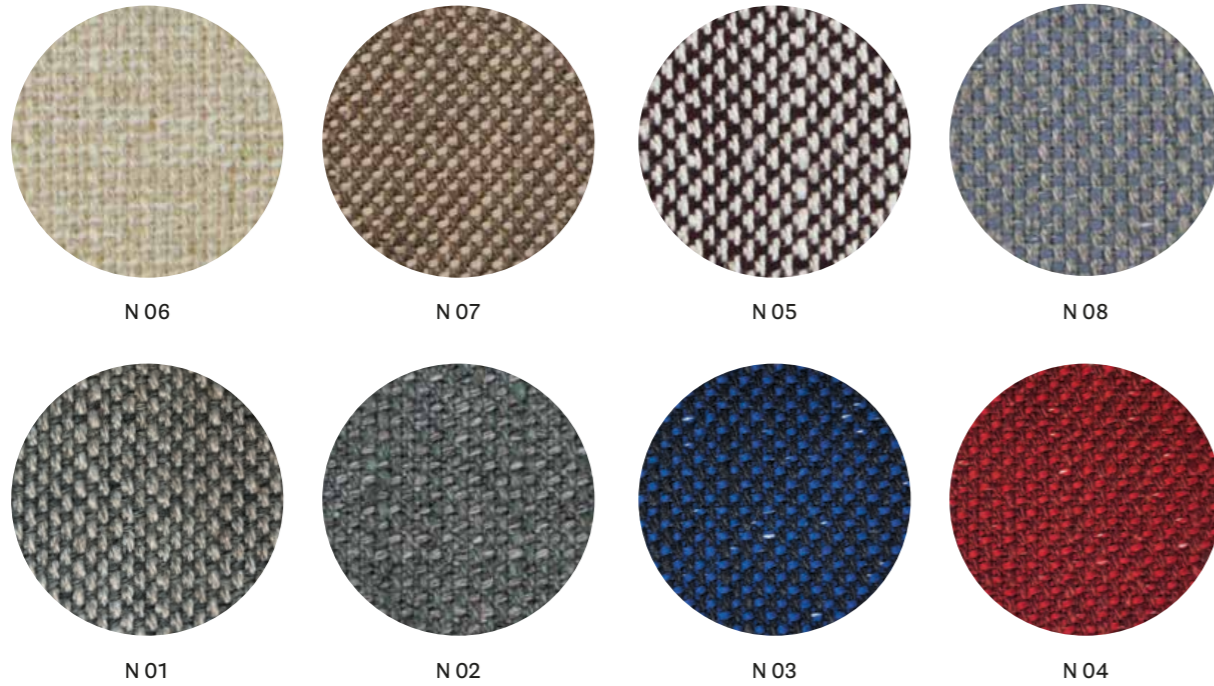
technical specifications / specifiche tecniche



- COMPOSITION / COMPOSIZIONE  
92% New Zealand Wool  
8% Polyamide
- ABRASION / ABRASIONE  
200.000 cycles, Martindale  
(EN ISO 12947-2)
- RUBBING FASTNESS / SOLIDITÀ ALLO SFREGAMENTO  
Dry and Wet 4-5, scale 1-5  
(EN ISO 105-X12)
- PILLING  
4, scale 1-5 (EN ISO 12945-2)
- LIGHT FASTNESS / SOLIDITÀ ALLA LUCE  
5-7, scale 1-8 (EN ISO 105-B02)
- FLAME RESISTANCE / RESISTENZA AL FUOCO  
BS EN 1021 1&2  
BS EN 1021-1  
BS 5852 Part 1 0, 1  
UNI 9175 Classe 1 IM  
US CA TB 117-2013

- APPROVED / OMOLOGATO





# Fabrics Tessuti

Outdoor

technical specifications / specifiche tecniche



• COLLECTION / COLLEZIONE

**kvadrat**

SUNNIVA 3: N01, N02, N05 ÷ N08

SUNNIVA 2: N03, N04

DESIGNERS Raf Simons & Fanny Aronsen

• COMPOSITION / COMPOSIZIONE

58% New wool

25% Viscose

8% Linen

5% Nylon

4% Polyester

• ABRASION / ABRASIONE

50.000 cycles, Martindale  
(EN ISO 12947)

• RUBBING FASTNESS / SOLIDITÀ ALLO SFREGAMENTO

only for SUNNIVA 3:

Dry 4-5 and Wet 3-5, scale 1-5  
(ISO 105-X12)

• PILLING

3, scale 1-5 (EN ISO 12945)

• LIGHT FASTNESS / SOLIDITÀ ALLA LUCE

for SUNNIVA 3: 4-7, scale 1-8

for SUNNIVA 2: 5-7, scale 1-8  
(ISO 105-B02)

• FLAME RESISTANCE / RESISTENZA AL FUOCO

AS/NZS 3837, class 2

BS 5852 Part 1 with treatment

BS 5852 Crib 5 with treatment

EN 1021 – 1/2

NFPA 260

US CA TB 117-2013

for SUNNIVA 3:

IMO FTP Code 2010: Part 8 with

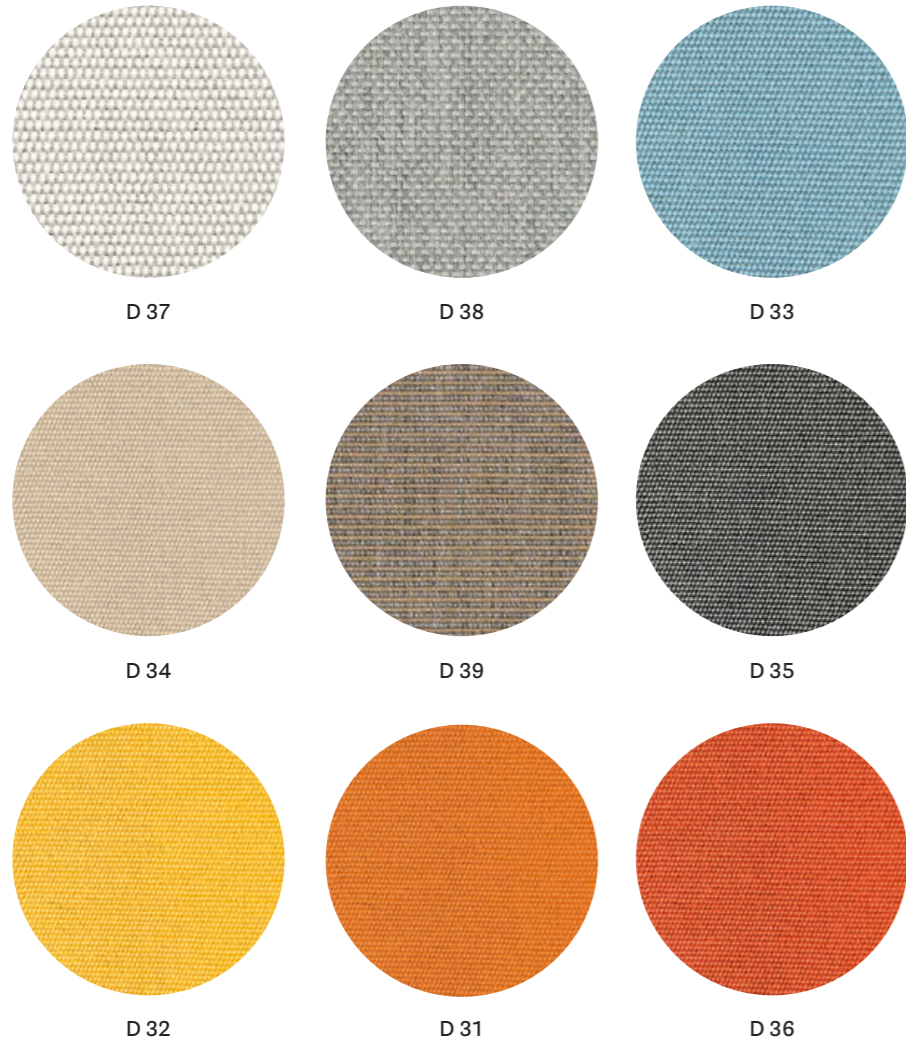
treatment

for SUNNIVA 2:

DIN 4102 B2

• APPROVED / OMOLOGATO





technical specifications / specifiche tecniche

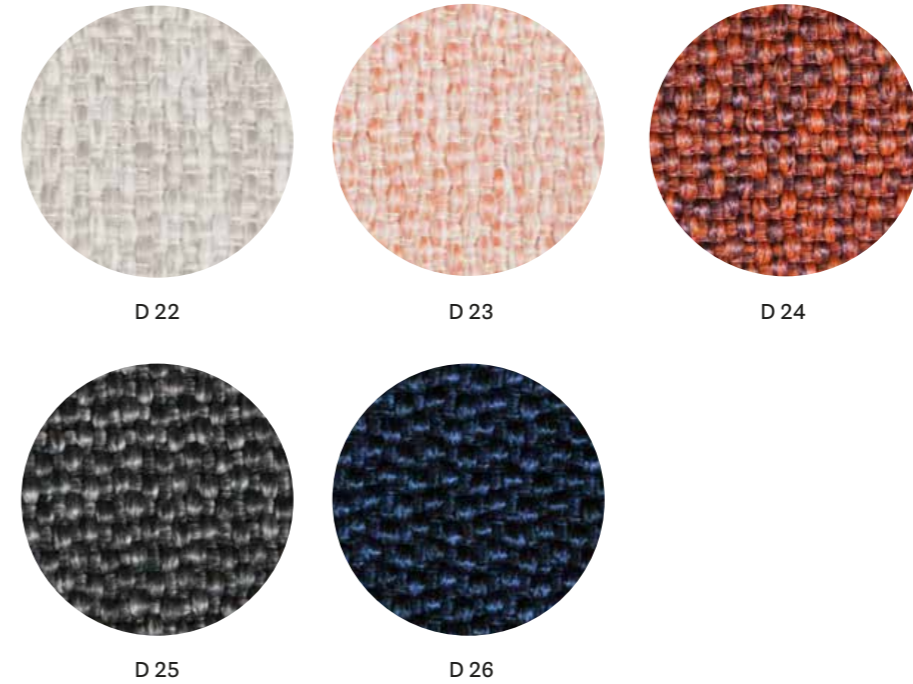


- COMPOSITION / COMPOSIZIONE  
100% Acrylic teflon
- ABRASION / ABRASIONE  
10.000 cycles, Martindale (EN ISO 12947)
- LIGHT FASTNESS / SOLIDITÀ ALLA LUCE  
7-8, scale 1-8 (EN ISO 105-B02)

for cushions only for collections / solo per cuscino delle collezioni



Only for Nolita cushions: rim available in colours D34, D35 and D36 / Solo per cuscino Nolita: disponibile con bordino in diversi colori D34, D35 e D36

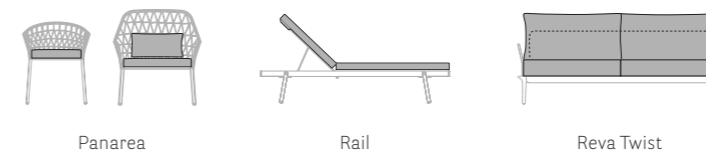


technical specifications / specifiche tecniche



- COMPOSITION / COMPOSIZIONE  
100% Polypropylene
- ABRASION / ABRASIONE  
> 30.000 cycles, Martindale (EN ISO 12947-2)
- RUBBING FASTNESS / SOLIDITÀ ALLO SFREGAMENTO  
Dry and Wet 4-5, scale 1-5 (EN ISO 105-X12)
- PILLING  
5, scale 1-5 (EN ISO 12945-2)
- LIGHT FASTNESS / SOLIDITÀ ALLA LUCE  
7, scale 1-8 (EN ISO 105-B02)
- WATER FASTNESS / SOLIDITÀ ALL'ACQUA  
5, scale 1-5 (EN ISO 105-E01)
- FLAME RESISTANCE / RESISTENZA AL FUOCO  
US CA TB 117-2013

for cushions only for collections / solo per cuscino delle collezioni



# Simil Leather

## Finta Pelle



CATEGORY A / CATEGORIA A

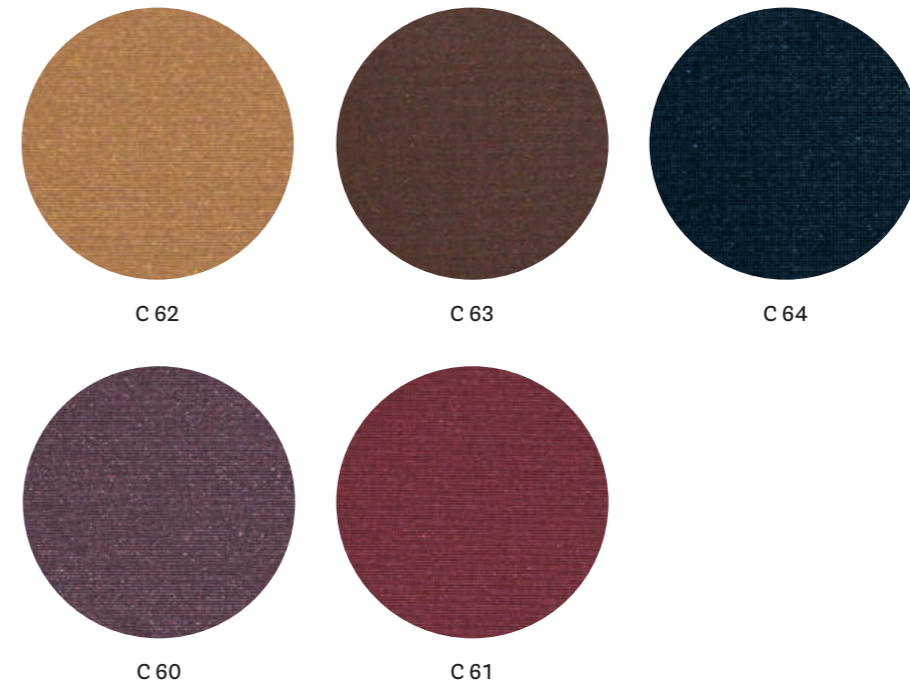


technical specifications / specifiche tecniche



- COMPOSITION / COMPOSIZIONE  
85% PVC  
15% Polyurethane
- ABRASION / ABRASIONE  
50.000 cycles, Martindale  
(UNI EN ISO 12947-2)
- RUBBING FASTNESS  
SOLIDITÀ ALLO SFREGAMENTO  
Dry and Wet 4-5, scale 1-5  
(UNI EN ISO 105-X12)
- LIGHT FASTNESS  
SOLIDITÀ ALLA LUCE  
6, scale 1-8  
(UNI EN ISO 105-B02)

CATEGORY C / CATEGORIA C

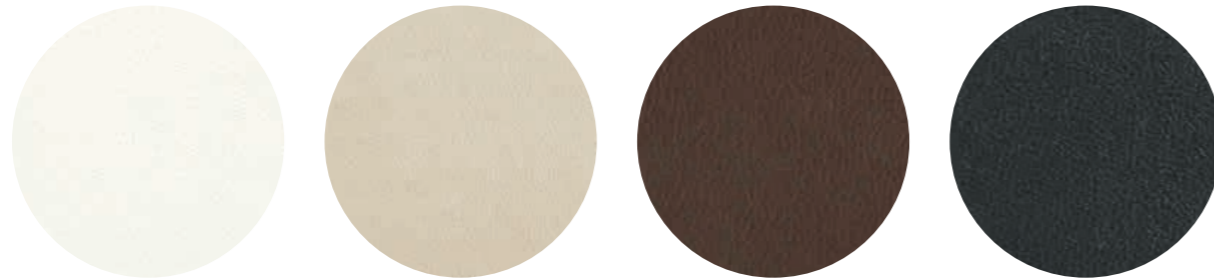


technical specifications / specifiche tecniche



- COMPOSITION / COMPOSIZIONE  
72% PVC  
25% Cotton  
3% Polyurethane
- ABRASION / ABRASIONE  
50.000 cycles, Martindale  
(EN ISO 5470-2)
- RUBBING FASTNESS / SOLIDITÀ ALLO SFREGAMENTO  
Dry and Wet 4-5, scale 1-5  
(UNI EN ISO 105-X12)
- LIGHT FASTNESS / SOLIDITÀ ALLA LUCE  
6, scale 1-8 (UNI EN ISO 105-B02)
- FLAME RESISTANCE / RESISTENZA AL FUOCO  
BS 5852-1 Part 1  
EN 1021-2  
IMO RESOLUTION A.652 (16): 1989  
UNI 9175 Classe 1 IM  
US CA TB 117-2013

CATEGORY C / CATEGORIA C

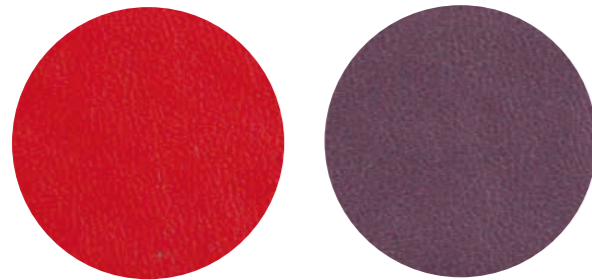


C 90

C 94

C 95

C 93



C 92

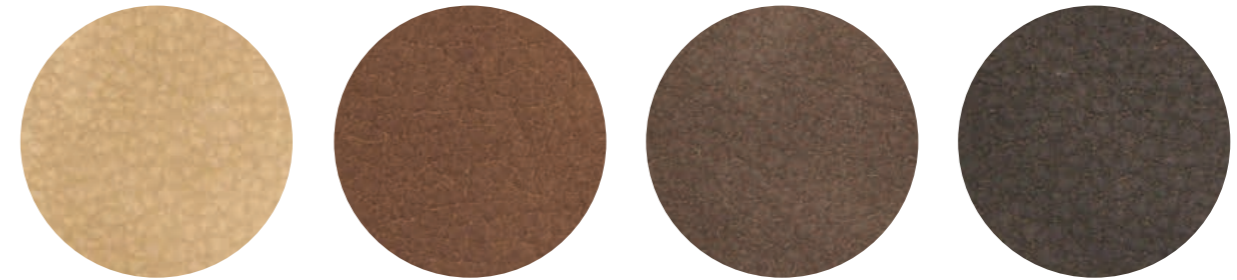
C 91

technical specifications / specifiche tecniche



- **COMPOSITION / COMPOSIZIONE**  
72% PVC  
25% Cotton  
3% Polyurethane
- **ABRASION / ABRASIONE**  
50.000 cycles, Martindale (EN ISO 5470-2)
- **RUBBING FASTNESS / SOLIDITÀ ALLO SFREGAMENTO**  
Dry and Wet 4-5, scale 1-5 (UNI EN ISO 105-X12)
- **LIGHT FASTNESS / SOLIDITÀ ALLA LUCE**  
6, scale 1-8 (UNI EN ISO 105-B02)
- **FLAME RESISTANCE / RESISTENZA AL FUOCO**  
BS 5852-1 Part 1  
EN 1021-2  
IMO RESOLUTION A.652 (16): 1989  
UNI 9175 Classe 1 IM  
US CA TB 117-2013

CATEGORY C / CATEGORIA C



C 45

C 46

C 47

C 48

technical specifications / specifiche tecniche



- **COMPOSITION / COMPOSIZIONE**  
80% PVC  
18% PES  
2% Polyurethane
- **ABRASION / ABRASIONE**  
50.000 cycles, Martindale (EN ISO 5470-2)
- **RUBBING FASTNESS / SOLIDITÀ ALLO SFREGAMENTO**  
Dry and Wet 4-5, scale 1-5 (UNI EN ISO 105-X12)
- **FLAME RESISTANCE / RESISTENZA AL FUOCO**  
RESISTENZA AL FUOCO  
BS 5852 Part 1 0,1  
EN 1021-1&2  
UNI 9175 Classe 1 IM



C 139

C 140

C 141

C 134

C 130

C 131

C 132

C 133

C 135

C 136

C 137

C 138

technical specifications / specifiche tecniche



- COMPOSITION / COMPOSIZIONE  
76% PVC  
22% PES  
2% Polyurethane
- ABRASION / ABRASIONE  
60.000 cycles, Martindale  
(ISO 5470-2)

- RUBBING FASTNESS / SOLIDITÀ ALLO SFREGAMENTO  
Dry and Wet 4-5, scale 1-5  
(ISO 105-X12)
- LIGHT FASTNESS / SOLIDITÀ ALLA LUCE  
6, scale 1-8 (ISO 105-B02)

- FLAME RESISTANCE / RESISTENZA AL FUOCO  
BS 5852-1 match test  
EN 1021 Part 1-2  
UNI 9175 Classe 1 IM  
US CA TB 117-2013



C 14

C 21

C 15

C 17

C 13

C 12

C 20

C 11

C 18

C 22

C 10

technical specifications / specifiche tecniche



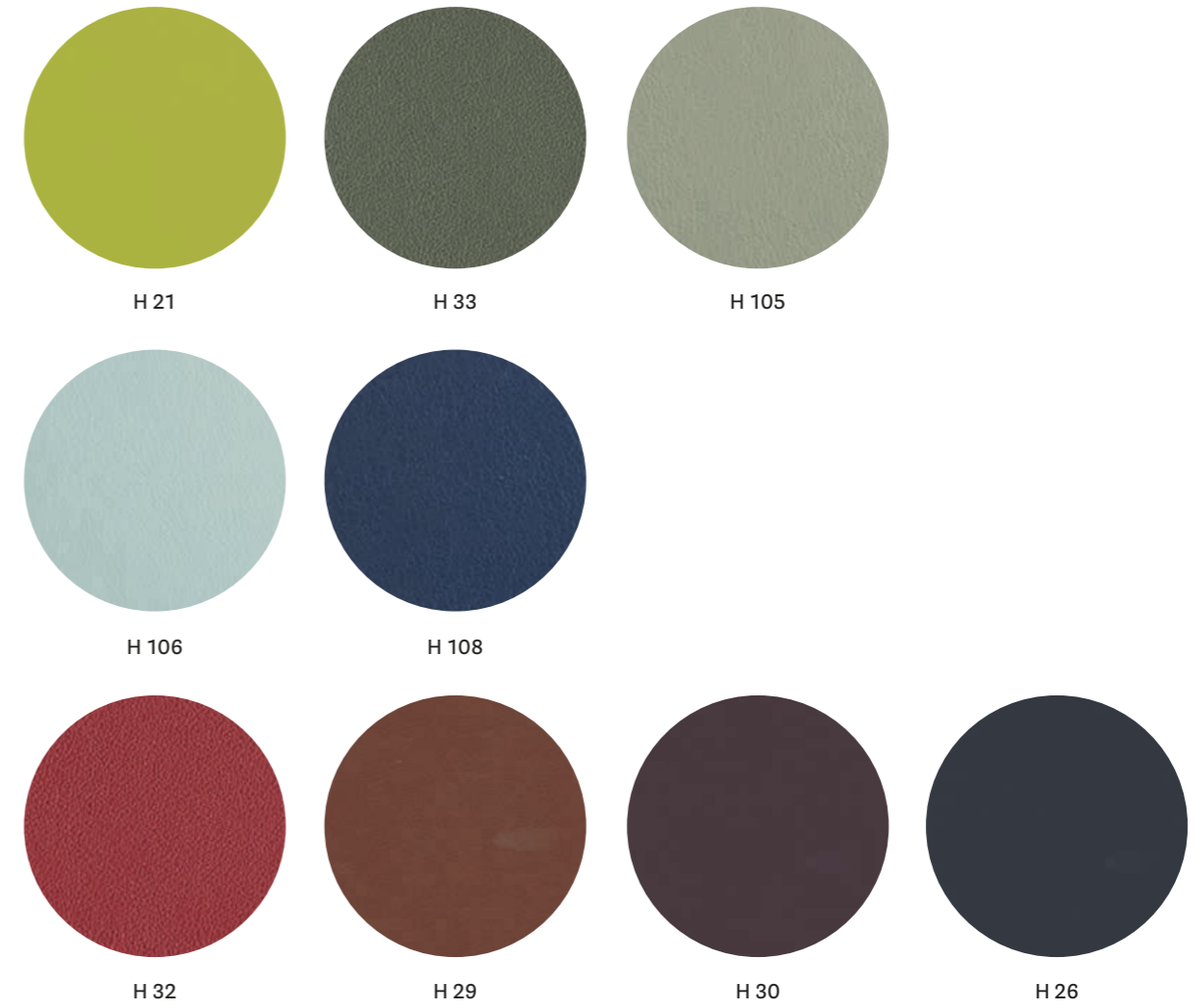
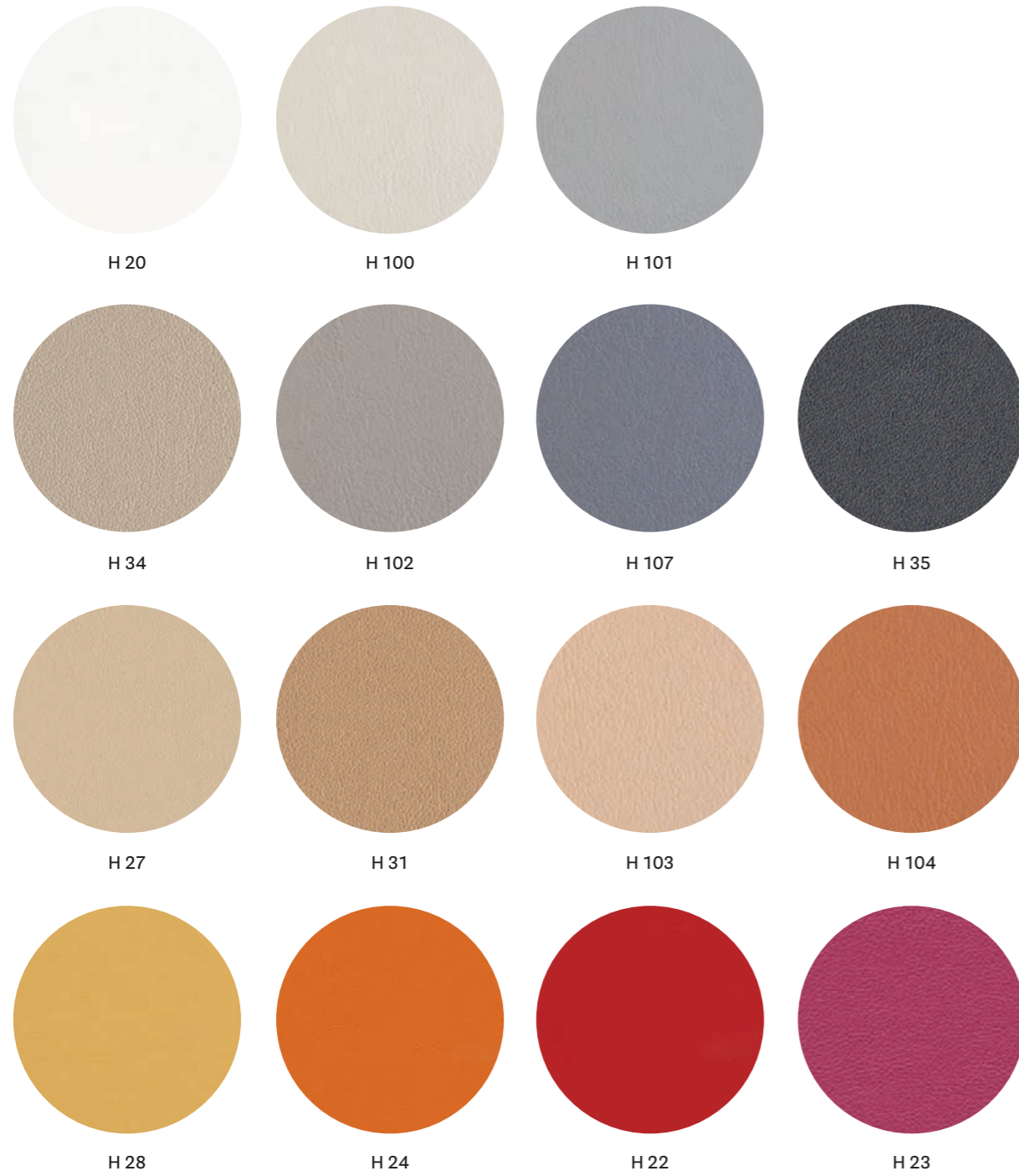
- COMPOSITION / COMPOSIZIONE  
85% PVC  
15% Cotton
- ABRASION / ABRASIONE  
150.000 cycles, Martindale  
(ISO 5470-2)

- LIGHT FASTNESS / SOLIDITÀ ALLA LUCE  
≥6, scale 1-8 (EN ISO 105-B02)
- FLAME RESISTANCE / RESISTENZA AL FUOCO  
B2 (DIN 4102)  
BS 5852 Crib 5  
EN 1021.1-2  
EN 13501-1 - Cs3do  
FAR 25853 App F Part 1

- IMO RESOLUTION A.652  
NF D60-013 - AM 18  
NFP 92503 M1  
NY/NJ - Port Authority  
UFAC Fabric Class 1  
German fire standard B1 (except C12 and C22)  
US CATB 117  
US CATB 133

- APPROVED / OMOLOGATO





technical specifications / specifiche tecniche



- COMPOSITION / COMPOSIZIONE  
63% Polyurethane  
29% Cotton  
8% PES
- ABRASION / ABRASIONE  
150.000 cycles, Martindale  
(UNI EN ISO 12947-2)

- LIGHT FASTNESS / SOLIDITÀ ALLA LUCE  
5-6, scale 1-8 (UNI EN ISO 105-B02)
- FLAME RESISTANCE / RESISTENZA AL FUOCO  
BS 5852 Crib 5  
BS 5852 Part 1-2  
EN 1021 Part 1-2  
IMO resolution FTP Code 2010

IMO resolution A.652 (16):1989  
UNI 9175 Classe 1 IM  
US CA TB 117-2013

# Leather Pelle

CATEGORY P / CATEGORIA P



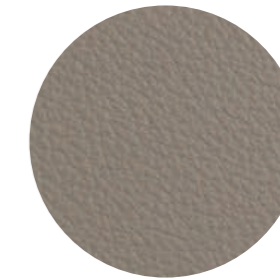
PBI



PGC



PSA



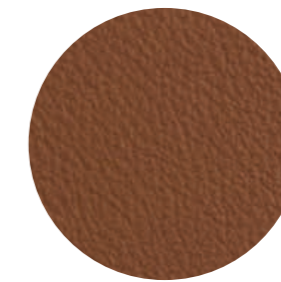
PGA



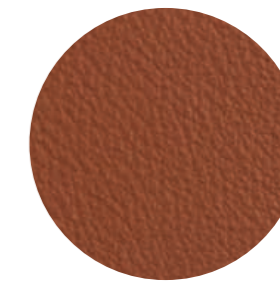
PBE



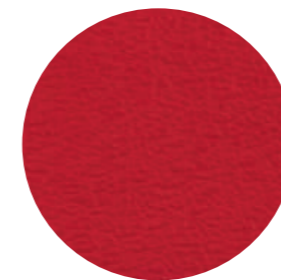
PGN



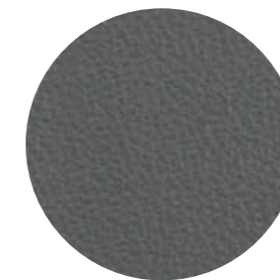
PTA



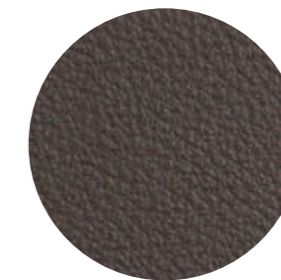
PTE



PRO



PGR



PMA



PNE

## technical specifications / specifiche tecniche

### • COLLECTION / COLLEZIONE



LINEA

### • COMPOSITION / COMPOSIZIONE

Mid grain leather  
Pelle mezzo fiore

### • RUBBING FASTNESS / SOLIDITÀ ALLO SFREGAMENTO Dry (500 Cycles) and Wet (250 Cycles) $\geq 4$ (UNI EN ISO 11640:1998)

- LIGHT FASTNESS / SOLIDITÀ ALLA LUCE  $\geq 5$  (UNI EN ISO 105 B02) (MET.5)
- FLAME RESISTANCE / RESISTENZA AL FUOCO  
BS 5852:1979  
BS EN 1021-1-2:2006  
IMO RES A652 (16)

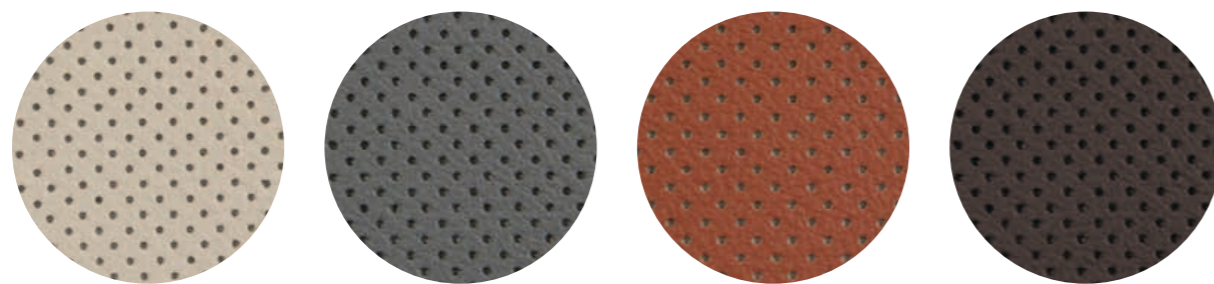
## cleaning / lavaggio

Clean with a damp cloth using water. Do not use detergents, solvents, bleached, abrasives. Pulire con un panno umido d'acqua. Non usare detersivi, solventi, candeggianti, abrasivi.

### • APPROVED / OMOLOGATO



CATEGORY P / CATEGORIA P



PGCF

PGRF

PTEF

PMAF

technical specifications / specifiche tecniche

• COLLECTION / COLLEZIONE



• COMPOSITION / COMPOSIZIONE  
Perforated mid grain leather  
Pelle mezzo fiore traforata

• RUBBING FASTNESS / SOLIDITÀ ALLO SFREGAMENTO  
Dry (500 Cycles) and Wet (250 Cycles)  $\geq 4$   
(UNI EN ISO 11640:1998)

• LIGHT FASTNESS / SOLIDITÀ ALLA LUCE  
 $\geq 5$  (UNI EN ISO 105 B02) (MET.5)  
• FLAME RESISTANCE / RESISTENZA AL FUOCO  
BS 5852:1979  
BS EN 1021-1-2:2006  
IMO RES A652 (16)

cleaning / lavaggio

Clean with a damp cloth using water. Do not use detergents, solvents, bleached, abrasives.  
Pulire con un panno umido d'acqua. Non usare detersivi, solventi, candeggianti, abrasivi.

• APPROVED / OMOLOGATO



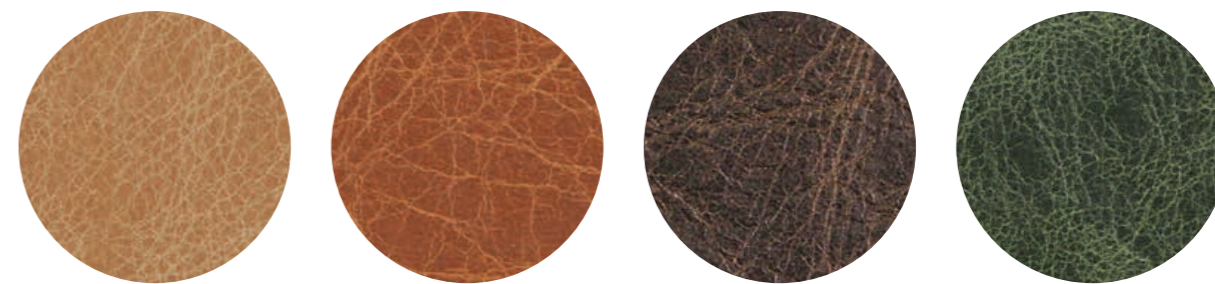
only for collections / solo per collezioni



Inner part of the back, upper part of the seat.  
Lato interno dello schienale e parte superiore del sedile.

Vic / Vic Metal

CATEGORY P / CATEGORIA P



PBS

PCO

PMS

PVE

technical specifications / specifiche tecniche

• COLLECTION / COLLEZIONE



• COMPOSITION / COMPOSIZIONE  
Vintage mid grain leather  
Pelle mezzo fiore anticata

• RUBBING FASTNESS / SOLIDITÀ ALLO SFREGAMENTO  
Dry (50 Cycles) and Wet (20 Cycles)  $\geq 3$   
(EN ISO 11640:1998)  
• LIGHT FASTNESS / SOLIDITÀ ALLA LUCE  
 $\geq 2/3$  (UNI EN ISO 105-B02) (MET.5)  
• FLAME RESISTANCE / RESISTENZA AL FUOCO  
BS 5852:1979  
BS EN 1021-1-2:2006

cleaning / lavaggio

Clean with warm and damp cloth. Do not use detergents, solvents, bleached, abrasives.  
Pulire con acqua calda e un panno umido. Non usare detersivi, solventi, candeggianti, abrasivi.

only for collections / solo per collezioni

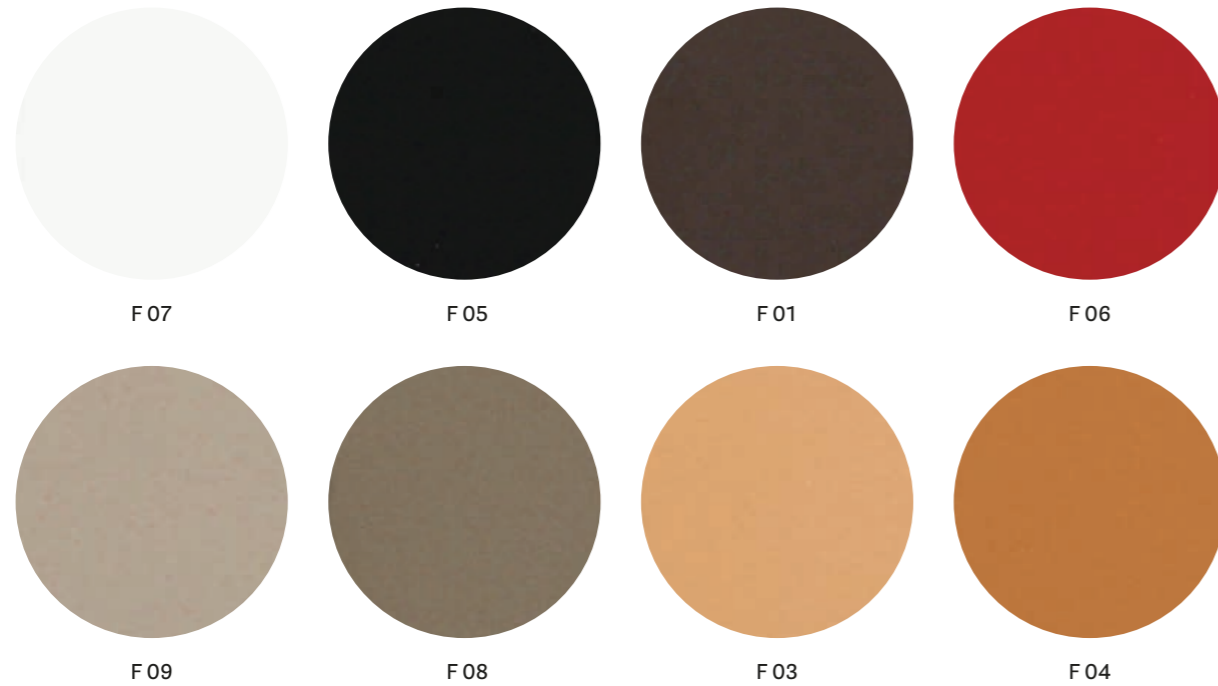


Malmö

Inga

**Hard leather**  
Cuoio

CATEGORY F / CATEGORIA F



technical specifications / specifiche tecniche

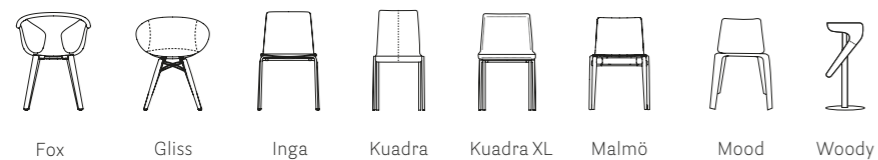
• **COMPOSITION / COMPOSIZIONE**  
**Genuine hard leather, tanned with vegetable substances.**  
 Cuoio naturale, conciato con sostanze vegetali.

• **RUBBING FASTNESS / SOLIDITÀ ALLO SFREGAMENTO**  
**Satisfactory up to maximum 700 abrasions in humid environment and 1000 abrasions in dry environment.**  
 Soddisfacente sino a max 700 abrasioni all'umido e 1000 abrasioni al secco.

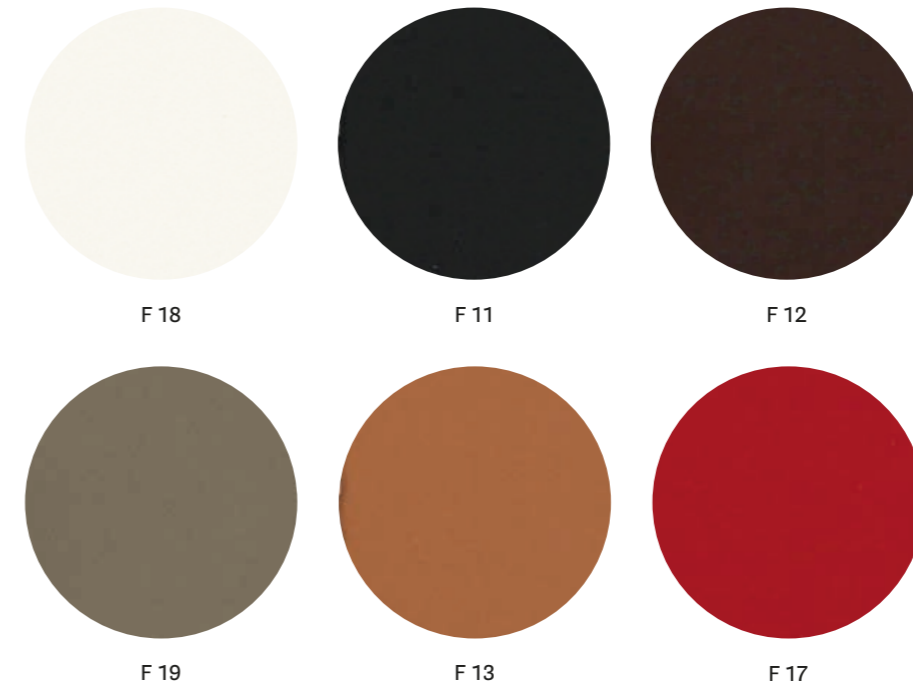
cleaning / lavaggio

**Clean with a damp cloth using water.**  
 Pulire con un panno umido d'acqua.

only for collections / solo per collezioni



CATEGORY F / CATEGORIA F



technical specifications / specifiche tecniche

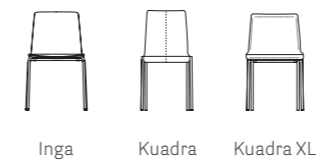
• **COMPOSITION / COMPOSIZIONE**  
**Regenerated hard leather. Tanned leather cuttings and shavings linked with natural rubber latex.**  
 Cuoio rigenerato. Ritagli e rasatura di cuoio conciato legati con lattice di gomma naturale.

• **RUBBING FASTNESS / SOLIDITÀ ALLO SFREGAMENTO**  
**Dry and wet >1000 (UNI EN ISO 11640)**  
 • **LIGHT FASTNESS / SOLIDITÀ ALLA LUCE**  
**4-5 Xenotest Method**  
 • **FLAME RESISTANCE / RESISTENZA AL FUOCO**  
**BS EN 1021 1&2**  
**BS 5852 Part 1**  
**US CA TB 117 E Part 1**

cleaning / lavaggio

**Clean with a damp cloth using water.**  
 Pulire con un panno umido d'acqua.

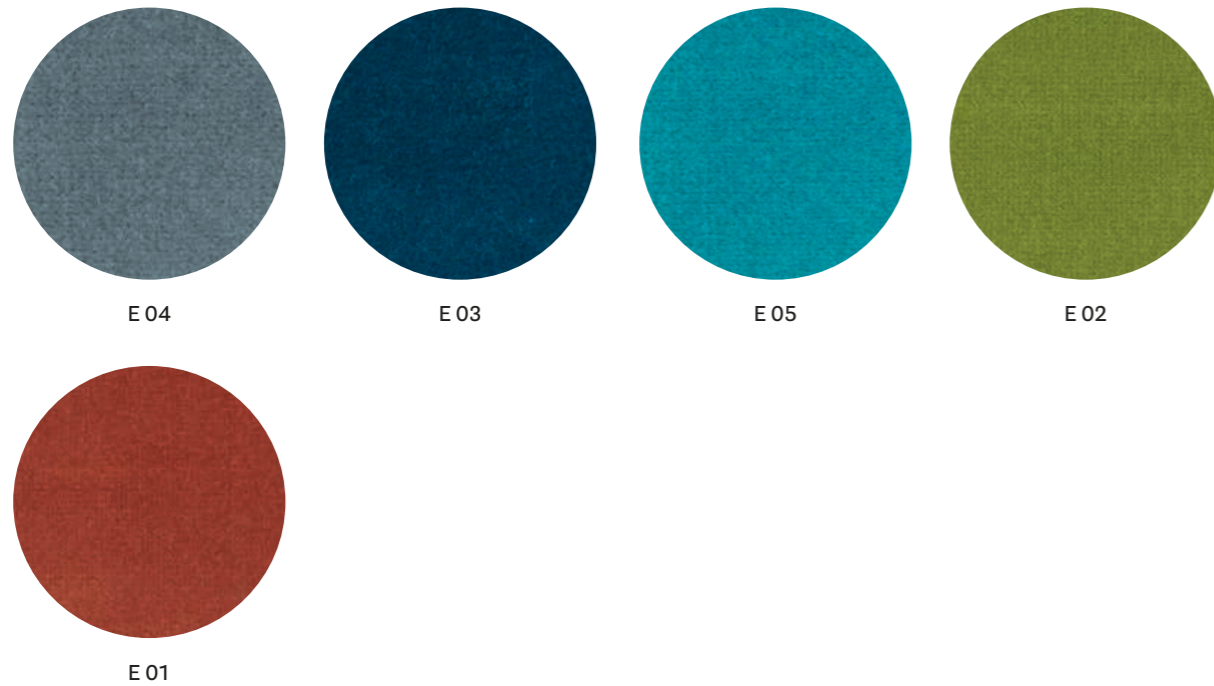
only for collections / solo per collezioni





**Velvet**  
Velluto

CATEGORY E / CATEGORIA E

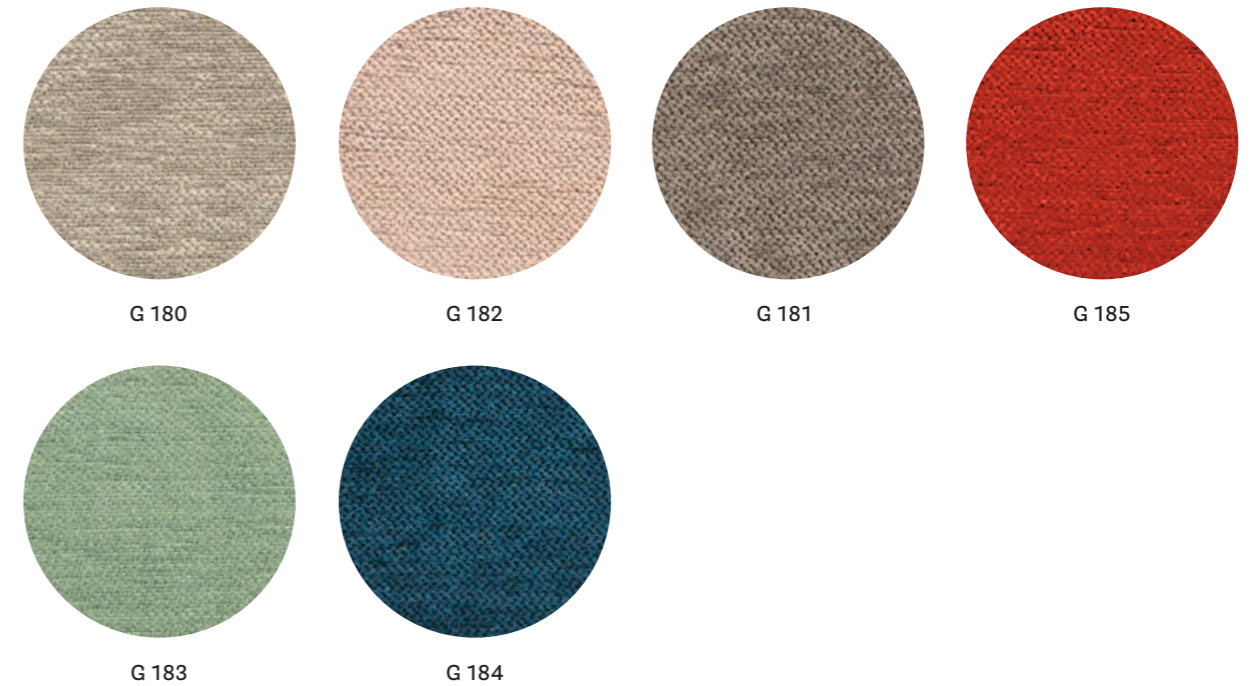


technical specifications / specifiche tecniche



- COLLECTION / COLLEZIONE  
**DEDAR**  
ADAMO & EVA
- COMPOSITION / COMPOSIZIONE  
100% Cotton
- ABRASION / ABRASIONE  
50.000 cycles, Martindale (ISO 12947-2)
- RUBBING FASTNESS / SOLIDITÀ ALLO SFREGAMENTO  
Dry 4-5 and Wet 3-5, scale 1-5 (ISO 105-X12)
- LIGHT FASTNESS / SOLIDITÀ ALLA LUCE  
4-6, scale 1-8 (ISO 105-B02)

CATEGORY G / CATEGORIA G



technical specifications / specifiche tecniche

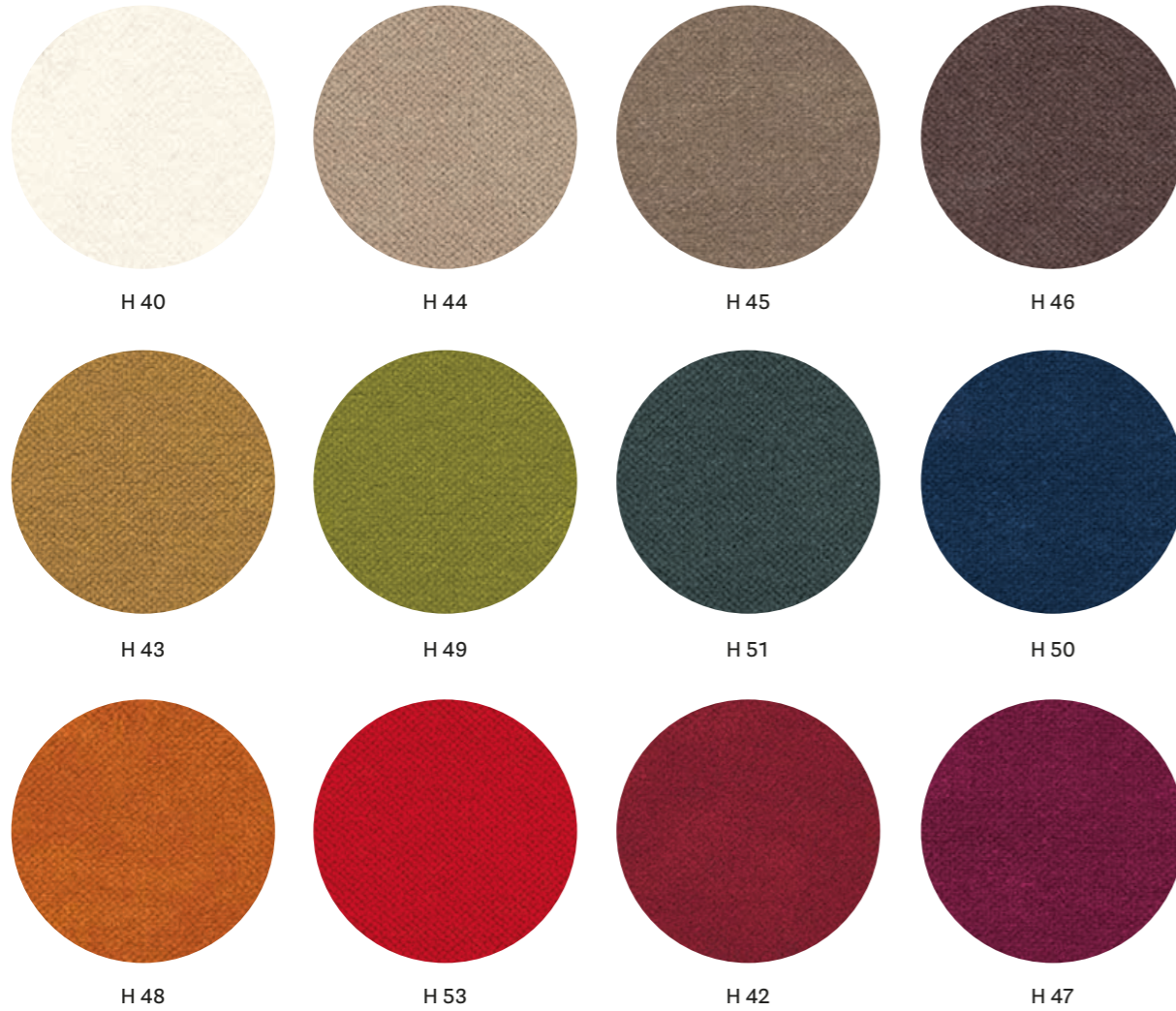


- COLLECTION / COLLEZIONE  
**kvadrat** - STILL  
DESIGNER Georgina Wright
- COMPOSITION / COMPOSIZIONE  
100% TREVIRA CS®
- ABRASION / ABRASIONE  
50.000 cycles, Martindale (EN ISO 12947)
- RUBBING FASTNESS / SOLIDITÀ ALLO SFREGAMENTO  
Dry and Wet 4-5, scale 1-5 (EN ISO 105-X12)
- PILLING  
4-5, scale 1-5 (EN ISO 12945)
- LIGHT FASTNESS / SOLIDITÀ ALLA LUCE  
5-7, scale 1-8 (ISO 105-B02:2014)
- SOUND ABSORPTION / ASSORBIMENTO ACUSTICO  
folded:  $\alpha_w = 0.85$  Class B (ISO 11654)
- FLAME RESISTANCE / RESISTENZA AL FUOCO  
BS 5852 Crib 5  
BS 5852 Part 1  
BS 5867 Part 2 type B  
DIN 4102 B1
- EN 1021-1/2  
IMO FTP Code 2010:Part 8  
NF D60-013  
NF P92 57 M1  
ÖNORM B1/Q1  
SN 198 898 5.2  
UNI 9175 Classe 1 IM  
US CA TB 117-2013

- APPROVED / OMOLOGATO



CATEGORY H / CATEGORIA H



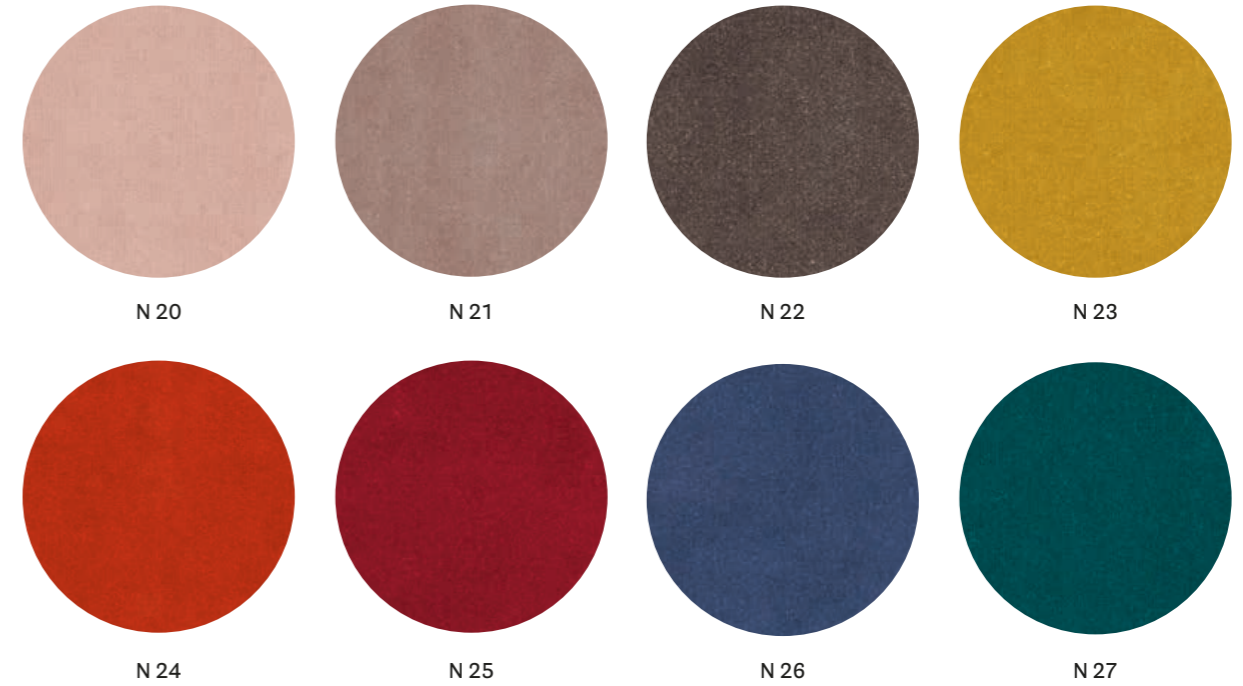
technical specifications / specifiche tecniche



H 41

- COMPOSITION / COMPOSIZIONE  
100% TREVIRA CS®
- ABRASION / ABRASIONE  
190.000 cycles, Martindale  
(EN ISO 12947-2)
- RUBBING FASTNESS / SOLIDITÀ ALLO SFREGAMENTO  
Dry and Wet 4-5, scale 1-5  
(EN ISO 105-X12)
- PILLING  
5, scale 1-5 (EN ISO 12945-2)
- LIGHT FASTNESS / SOLIDITÀ ALLA LUCE  
5, scale 1-8 (EN ISO 105-B02)
- SOUND ABSORPTION / ASSORBIMENTO ACUSTICO  
folded:  $\alpha_w = 0.70$  (EN ISO 354:2003)
- FLAME RESISTANCE / RESISTENZA AL FUOCO  
BS 5852 Part 0,1  
DIN 4102 B1  
EN 1021-1&2  
IMO MSC 307(88) Annex 1 Part 7-8  
NF P 92-503-507 M1  
NFPA 260:2019  
UNI 9177 Classe 1  
UNI 9175 Classe 1 IM  
US CA TB 117-2013

CATEGORY N / CATEGORIA N



technical specifications / specifiche tecniche



- COLLECTION / COLLEZIONE  
**kvadrat-SAHCO**  
BALBOA  
DESIGNER Najberg
- COMPOSITION / COMPOSIZIONE  
100% Polyester FR
- ABRASION / ABRASIONE  
100.000 cycles, Martindale  
(EN ISO 12947)
- PILLING  
4, scale 1-5  
(EN ISO 12945-2)
- LIGHT FASTNESS / SOLIDITÀ ALLA LUCE  
4-6, scale 1-8  
(EN ISO 105-B02)
- SOUND ABSORPTION / ASSORBIMENTO ACUSTICO  
folded:  $\alpha_w = 0.80$  Class B  
(ISO 11654)
- FLAME RESISTANCE / RESISTENZA AL FUOCO  
BS 5852 Crib 5  
BS 5867 Part 2 Type B  
EN 1021-1/2  
EN 13501, B-s1, d0  
IMO FTP Code 2010: Part 8  
ÖNORM B1/Q1  
SN 198 898 5.2  
UNI 9175 Classe 1 IM  
US CA TB 117-2013

- APPROVED / OMOLOGATO

