

punt

+ design Nation

ART, CRAFT & DESIGN



DUNE

TECHNICAL INFORMATION SHEET

DUNE

BY MONICA ARMANI, 2024

punt

+ design Nation



PRODUCT TYPE

Armchair

Dune, designed by Monica Armani, is presented as a symbol of elegance inspired by nature. Its shapes refer to the majestic striations that sand generates in desert dunes, capturing the organic beauty and serenity of the landscape. A piece capable of bringing sophistication to any project and evoking a sense of perpetual movement thanks to its soft, curved lines.

TIPOLOGÍA DE PRODUCTO

Butaca

Dune, diseñado por Monica Armani, se presenta como un símbolo de elegancia inspirada en la naturaleza. Sus formas hacen referencia a las majestuosas estrías que la arena genera en las dunas del desierto, capturando la belleza orgánica y la serenidad del paisaje. Una pieza capaz de aportar sofisticación a cualquier proyecto y evocar una sensación de movimiento perpetuo gracias a sus líneas suaves y curvas.

DETAILS DETALLES



DUNE


BY MONICA ARMANI, 2024

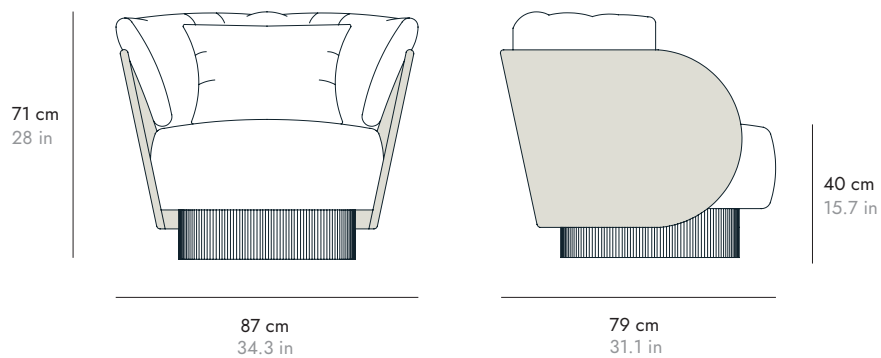
punt

+ design Nation

DIMENSIONS. DIMENSIONES

DUS100

Swivel base
Base giratoria 



DUNE

BY MONICA ARMANI, 2024

punt

+ design Nation

MATERIALS

Upholstery.
BS standard fireproof foam (33kg and 40kg).
Goose feather and siliconised fibre filled cushion.

Wood.
Backrest made of resistant curved plywood board with natural oak veneer.

Base.
Veneered plywood board with flexible textured lacquered MDF panel.

Wooden parts Partes de madera



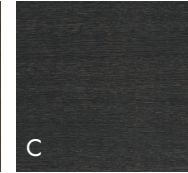
SUPER MATT OAK
ROBLE SÚPER MATE
CHENE SUPERMATE
SUPER MATT EICHE
ROVERE OPACO



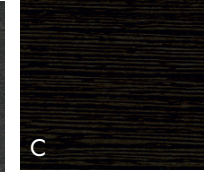
WHITENED OAK
ROBLE BLANQUEADO
CHENE BLANCHI
EICHE WEISS
ROVERE SBIANCATO



WALNUT STAINED OAK
ROBLE TEÑIDO NOGAL
CHENE TEINTÉ NOYER
EICHE NUSSBAUM
GEBEIZT
ROYERE TINTO NOLE



DARK GREY STAINED OAK
ROBLE TEÑIDO GRIS
CHENE TEINTE GRIS
DUNKELGRAU GEBEIZTE
EICHE
ROVERE TINTO GRIGIO
SCURO



EBONY STAINED OAK
ROBLE TEÑIDO ÉBANO
CHENE TEINTÉ ÉBÔNE
EICHE GEBEIZT
EBENHOLZ
ROVERE TINTO ÉBANO

MATERIALES

Tapizados.
Espumas ignífugas normativa BS (33kg y 40kg).
Almohadón relleno de pluma de oca y fibra siliconada.

Madera.
Respaldo fabricado en resistente tablero curvado de contrachapado chapado en madera de roble natural.

Base.
Tablero de contrachapado chapado con panel flexible de MDF lacado texturizado.

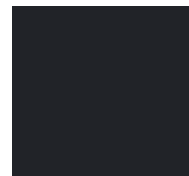
Base Base



COPPER
COBRIZO
CUIVRE
KUPFER
RAME



GREEN FOREST
VERDE BOSQUE
FOREST VERT
WALDGRÜN
VERDE FORESTA



BLACK
NEGRO
NOIR
SCHWARZ
NERO



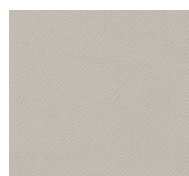
For special RAL colours, please consult Punt.

Para colores RAL especiales consultar con Punt.

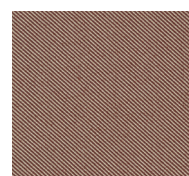
Fabrics G2



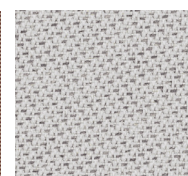
RELATE 101



RELATE 201



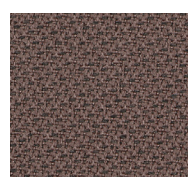
RELATE 341



TONAL 60122



TONAL 61179



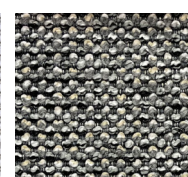
TONAL 64211



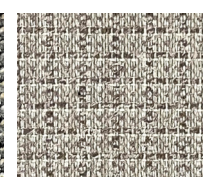
CASERTA 04



CASERTA 15



CASERTA 19



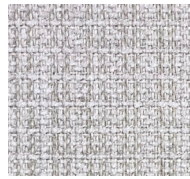
BACOLI 04

DUNE

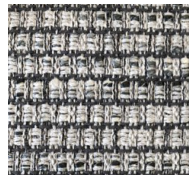
BY MONICA ARMANI, 2024

punt

+ design Nation



BACOLI 15



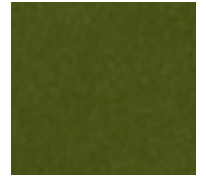
ODDI 09



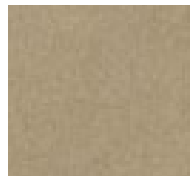
MATIS 05



MATIS 07



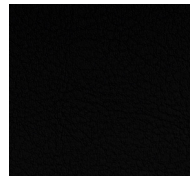
SEVEN 59



SEVEN 05



LEINEN 1049



SCHWARZ 9035

Fabrics G3



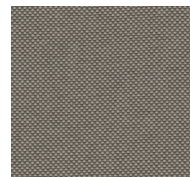
TEMPT 61169



TEMPT 61172



FIELD 232



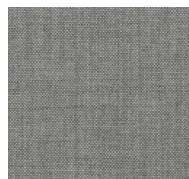
FIELD 242



REMIK 223



REMIK 233



REMIK 123

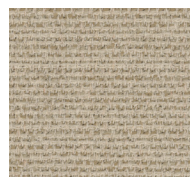
Fabrics G4



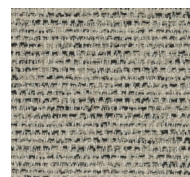
FOCUS 60309



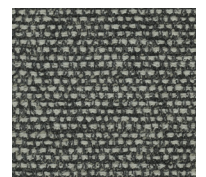
FOCUS 61242



SAVANNA 202



SAVANNA 122



SAVANNA 152

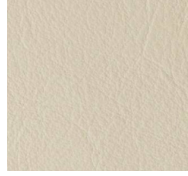
DUNE

BY MONICA ARMANI, 2024

punt

 design Nation

Fabrics G5



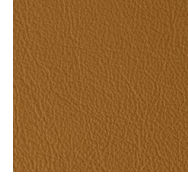
LAGUNA IVORY



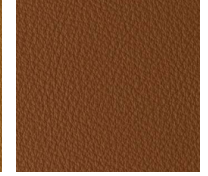
LAGUNA SAND



LAGUNA STONE



LAGUNA CAMEL



LAGUNA COGNAC



LAGUNA BROWN



LAGUNA BLACK