

Collection - Adima



ADIMA 00
H 85 P 50 H 56 H 47
1 m³ 0,37



ADIMA 01
H 91 P 51 H 58 H 48
1 m³ 0,37



ADIMA 04
H 91 P 52 H 58 H 48 H 69
1 m³ 0,37



ADIMA 05
H 89 P 64 H 76 H 42
1 m³ 0,51



ADIMA 05 XL
H 89 P 80 H 80 H 42
1 m³ 0,72



ADIMA 07
H 102 P 53 H 56 H 75
1 m³ 0,41



ADIMA 09 HB
H 120 P 125 H 79 H 42
1 m³ 1,6

Base options



BASE 100



BASE 102



BASE 103



BASE 106



BASE 107



BASE 110



BASE 111



BASE 113



BASE 120



BASE 121



BASE 127



BASE 128



BASE 101



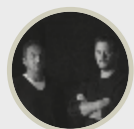
BASE 108



BASE 115



BASE 117



Design
CarlesiTonelli

Combining different areas of expertise and careers in industrial design, they founded their studio in 2004. They link a passion for design to their knowledge of materials and technologies, and producers' demands to the market trends. They accept the challenge to find

new meanings in simple things, adding harmonious and friendly shapes to both private and public scenarios. Design, art direction and communications are the fields where they perform and interact with customers, in a relationship sharing values and goals.

At its sole discretion, the company reserves the right to change dimensions and type of construction, and to make improvements and other changes to its products. The printing process does not give a perfect

reproduction of the colours. For more accuracy, it is advisable to refer to the samples of materials available on request. All reproduction rights of all or part of the designs and illustrations are reserved worldwide.

Adima



A comforting feeling

design CarlesiTonelli

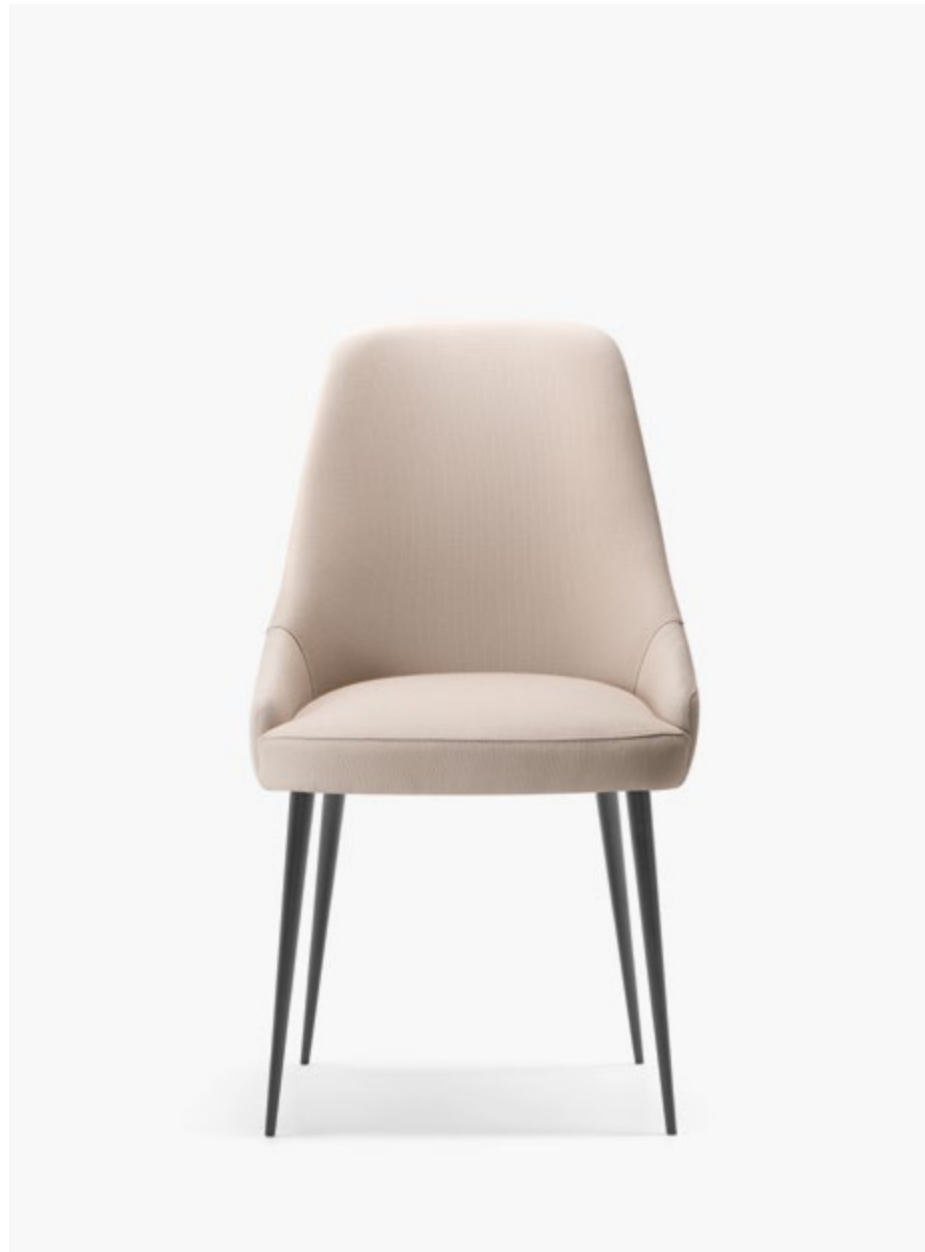


Revisiting tradition through the use of modern design, and capturing a deep sense of well-being and harmony in the most diverse public and domestic environments. Exploring endless possibilities of use and arrangement by way of simple, straightforward and at the same time elegant designs.

Adima interprets the concept of chair through refined minimalism. The clean-cut and cocooning shape of the frame, available in several versions, embraces its user while meeting the requirements of any interior design project.

Collection on page 62

ON THE RIGHT. Project: Biagioni Salò, Salò, Italy. Interior design: Pelizzari Studio. Photography: Mattia Aquila



Adima



+ design Nation

Adima





Adima

Project: Omaggio Architettonico, Milan, Italy.
Interior Design: Pelizzari Studio.
Photography: Mattia Aquila.

+ design Nation



Adima





Adima

Project: Lawn Tennis Club,
Castleknock, Ireland.



Adima



Adima



Adima